

you can
Canon

LEGRIA

Canon Camcorders
Put your world in motion



LEGRIA Put your world in motion

Based on industry-leading technology and over 70 years of imaging know-how, Canon introduces LEGRIA: a range of camcorders that let you capture the world as you see it. The unbeatable image quality brings your vision to life.

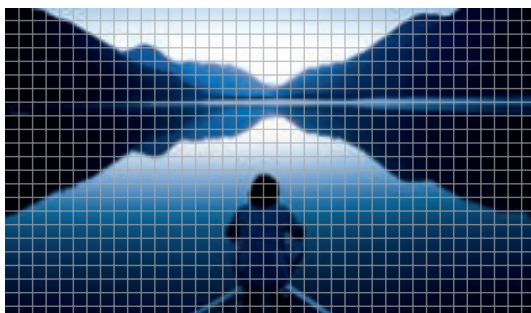
In the stunning detail of Full High Definition or easy-to-share Standard Definition, the sights you see and the scenes you want to remember are captured perfectly from the palm of your hand.



What is Full HD?

Full HDTV screens have a widescreen ratio of 16:9 and a frame resolution of 1920 x 1080 or 2.07MP (megapixels) – 5x the image size of Standard Definition screens. If you want your own movies to look great on your HDTV then you also need to capture video at a frame resolution of 1920 x 1080.

All LEGRIA Full HD camcorders do this. In fact the new HF and HF S series of camcorders use an even higher sensor resolution for the ultimate in image quality.



Normal TV:
720x576 resolution

Full HD TV:
1920x1080 resolution

Choosing the right Canon camcorder

Choose Full HD



Astonishingly realistic detail, colour and quality are the hallmarks of Canon's LEGRIA Full HD camcorders. Your movies will look great on an HDTV thanks to LEGRIA's Full High Definition resolution and 16:9 ratio widescreen recording format. The unbeatable image quality is perfect for viewing on Full HD or HD Ready TVs.

Choose SD

Standard Definition (SD) is great for quick and easy movie making. Engaging videos can be created on the compact LEGRIA SD camcorders, which can be easily edited on your home computer, and converted to internet ready videos. Your visions can be shared with your friends wherever they are. And if you don't have an HDTV yet, SD movies will still look great on your current TV.



Flash memory

Flash memory is a convenient way to capture and keep quality images whether you opt for an HD or an SD camcorder. Flash is compact and has no moving parts making it much less vulnerable to bumps and knocks that can corrupt traditional recording media. Despite its size, flash offers large amounts of storage space, 32GB of flash memory holds approximately 12 hrs of Full HD footage. The economical power consumption allows longer shooting from a single charge.



Canon's Dual Flash Memory (DFM) system combines internal flash memory – up to 32GB – with optional straight-to-memory card shooting for extra recording space and instant sharing.

Hard Disk Drive

If you need even more storage space, recording to Hard Disk Drive (HDD) is the choice for you. Canon HDD camcorders have capacity for up to 45 hours of HD movies – even when shooting on holidays and long days out, you won't run out of disk space. Each scene is saved as a thumbnail image so reviewing your movies is easy. Individual scenes can be selected without the need for rewinding or fast-forwarding.

The unique Canon advantage

Canon's name on a camcorder is the mark of quality built on an unrivalled heritage. Canon's commitment to imaging technology is inherent in every aspect of the LEGRIA camcorder design.

The Canon HD Camera System

Every LEGRIA HD camcorder benefits from the Canon HD Camera System: the unique combination of a genuine Canon HD Video lens, a Full HD CMOS sensor, and a DIGIC DV series image processor. These components are unique to Canon camcorders and are all designed and made in-house. In this way we're able to ensure the highest levels of quality control and see that each individual part works perfectly with the others.



Canon Lenses



HD Video Lens

With 50 years experience in crafting lenses for broadcast – for both SD and HD imaging – every Canon camcorder lens is constructed to the most exacting standards. Up to 13 individual lenses can be included in a single Canon camcorder lens, each featuring aspheric lens elements to remove any image distortion. This is where the highest quality imaging begins.

The highest-quality video at 24Mbps



All of Canon's HD camcorders record movies at a data rate of 24Mbps – the highest quality possible under the AVCHD standard. 24Mbps recording uses as much of the image data as it can to provide sharp detail, smooth motion and beautiful colours. The incredible quality imaging is therefore great for capturing fast-paced action.

CMOS: Full HD and a new, larger chip



The CMOS sensor is the eye of the camcorder. It's responsible for capturing your images. The advantages of CMOS sensors for video are that they have low power consumption, are more sensitive in low light and provide brilliant colour balance. The LEGRIA HF S10 and HF S100 feature a new 8.0 Megapixel CMOS sensor that captures movies even larger than 1920 x 1080 resolution – with higher data capture truly superb High Definition image quality is assured.

Processing power: DIGIC DV image processors



A camcorder's image processor has the job of handling the raw data received from the sensor and converting it into the video you watch. Totally unique to our camcorders, the DIGIC DV family of processors – including DIGIC DV II and the new DIGIC DV III – lie at the heart of Canon's superior imaging quality.

DIGIC DV III heralds a new generation of processing power. Evolved from the DIGIC DV II processor – originally developed to handle the increased data rate and requirements of HD – DIGIC DV III is optimised to process data from sensors that are larger than Full HD.

As DIGIC DV III handles this enormous amount of data, it employs a unique noise reduction system for clear and sharp images with excellent colour reproduction and tonal range. DIGIC DV III supports the larger colour gamut of xvYCC Colour Space (x.v.Color) and boasts a 25% increase in dynamic range compared with DIGIC DV II. This means it can capture more detail in the highlight and shadow areas.

Together with the new larger CMOS sensors, Canon camcorders now offer high quality photo capture. DIGIC DV processors use split-path processing to process still images separately to videos, and optimise them for contrast, detail and viewing as printed photos. The end result is superb colour-reproduction, no matter what you shoot.

The advantages of flash memory recording

Compact, stylish design

Whether it's internal memory or memory cards, because flash memory is so light, camcorders can be lighter and smaller too. The sleek, slim designs fit into your palm and your pocket.

Durable and safe

Because flash memory has no moving parts, it is much less vulnerable to data loss from accidental knocks and bumps.

Low power consumption

Flash memory needs very little power so you can now shoot for longer and record more on a single battery charge.

Quick and easy to share

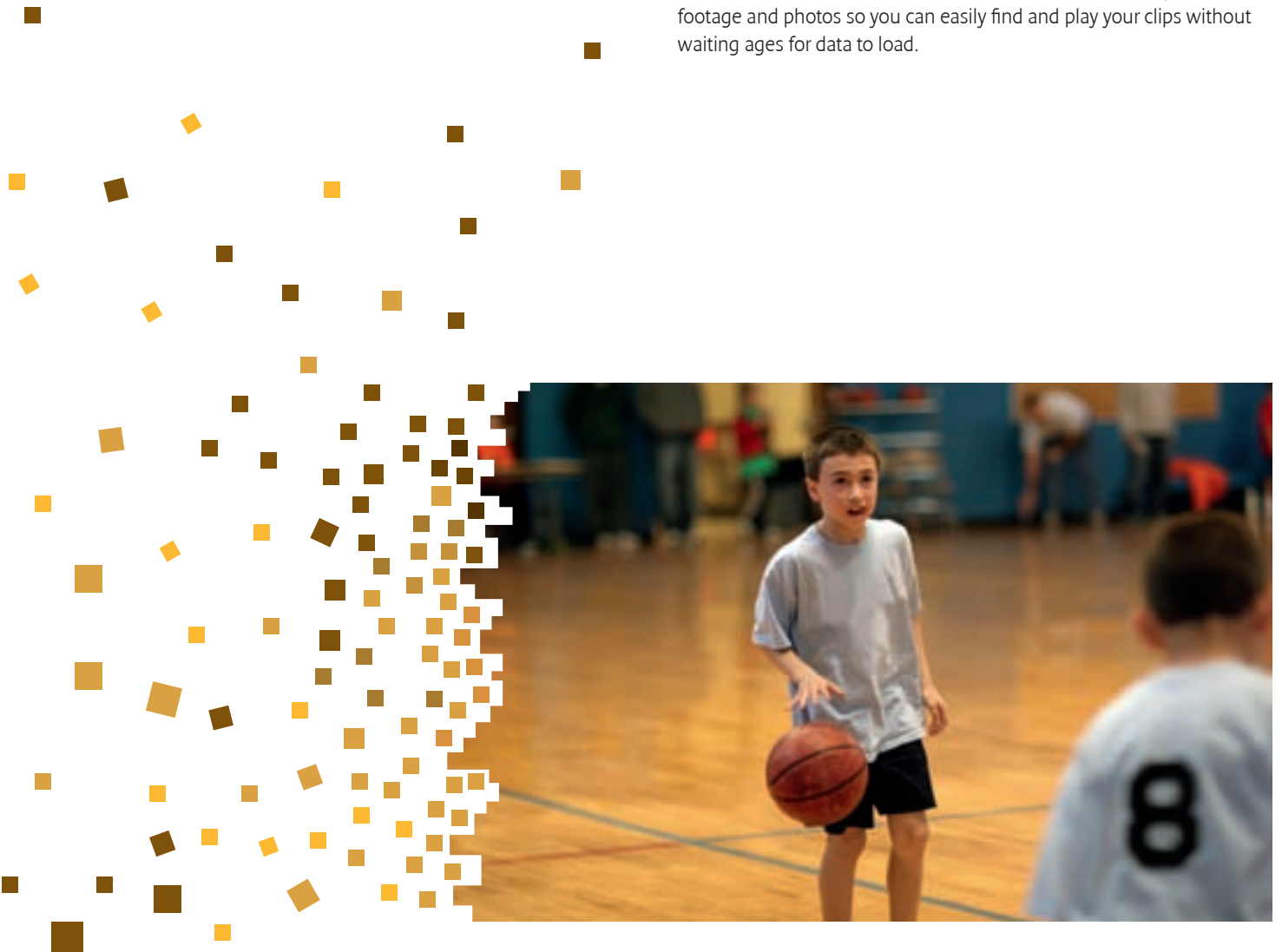
LEGRIA Dual Flash Memory camcorders can copy movies and footage directly from their internal flash memories to a removable SDHC memory card. Your memory card can then be used to import footage into your PC, be played directly on HD media players or shared with friends.

More memory

If you need to add more memory to your flash memory camcorder, additional memory cards can be purchased to add more storage capacity when you need it. And because SDHC memory cards are so small, taking extra cards with you is not a problem.

Fast response

Your camcorder powers up quickly so you never miss a moment of recording. The quick response time gives instant access to your video footage and photos so you can easily find and play your clips without waiting ages for data to load.



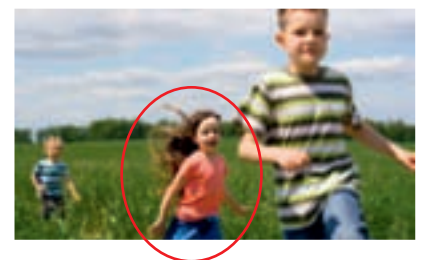
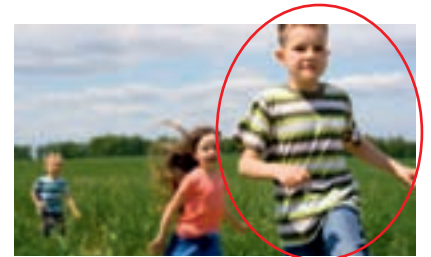
The advantages of Canon HD

Canon's HD camcorders have a range of specially developed features to help you make the best HD movies you can.



Instant AF

Unique to Canon HD camcorders, Instant AF uses two auto focus sensors to help you find the perfect focus with speed and accuracy. This is great for HD movies where errors in focusing can be more visible. The first sensor quickly estimates the distance to the subject, while the second makes the fine adjustments that give absolute clarity. Instant AF focusing works so quickly you may not even notice it's there.



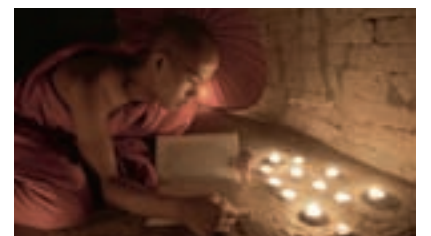
Super Range Optical Image Stabilizer (OIS)

Super Range OIS is an incredibly effective system - it compensates for almost every kind of movement, from the gentle murmurs of your breathing, to the vibrations of a car ride. The extra detail of HD movies can make small shakes more noticeable if you're new to shooting in HD. With OIS, the LEGRIA camcorders help you make smooth professional looking movies.



25p Cinema Mode

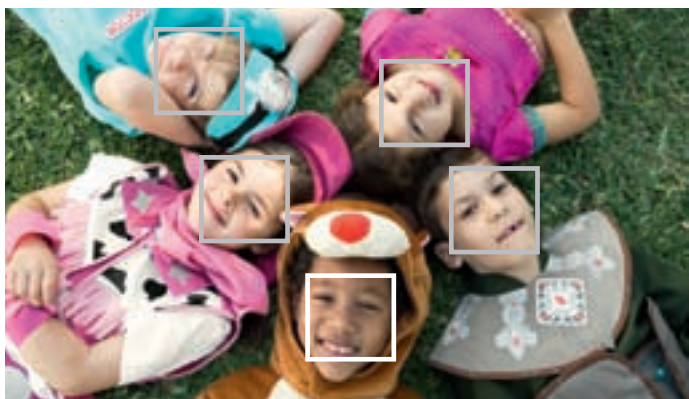
Combining a frame rate similar to traditional film with special colour settings, 25p Cinema Mode gives you more detail in light and shadowy areas, so your movie has the look of a feature film typically seen at the cinema.



Effortless HD – movie making the easy way

Canon's LEGRIA camcorders come with great new shooting features so movie making is easier than you'd ever imagine.

Face Detection Technology



Face Detection Technology

When filming, making sure the camcorder is focused on the correct person or object is essential to producing a great looking movie. Powered by DIGIC DV III, Canon's Face Detection Technology detects the faces of up to 35 individuals in a single frame, automatically optimising shooting settings for each. With up to nine faces highlighted automatically, you can then select the star of your movie and be assured that they'll remain perfectly focused throughout.

Face Detection AE (Auto Exposure) and Face Detection AF (Auto Focus) work together to quickly and accurately track and focus on each face. Even when faces are framed against very dark or very light backgrounds they remain correctly exposed and focused. Each face you want to film will be seen clearly in every scene.

When you want to find a recorded scene featuring a specific person Face Jump and Face Timeline allow you to see captured faces as thumbnails on the LCD screen. To play a specific scene you can search through your footage by spotting friends' faces.

Video Snapshot



Video Snapshot

Create wonderful video montages in Video Snapshot mode. Press the Record button and a short 4-second clip is captured – the typical duration of a shot in a TV show – with these 'snapshot clips' you can create a simple multi-shot movie in minutes, no PC required. You can even give your movie a soundtrack – upload your favourite tunes using Canon's Music Transfer Utility or use the free tracks provided on your camcorder and on the accompanying CD.

Pre REC



Pre REC

How many times have you missed that crucial shot because you didn't hit the record button fast enough? In Pre REC (pre-record) mode, your camcorder continuously stores 3 seconds of footage. So when you press the Record button, these 3 seconds are added to the beginning of the clip – you'll never miss that winning goal or a child's first steps again.

Capture high quality photos



With the power of DIGIC DV processing you can capture high resolution still images as well as high quality video.

Quick Start



Quick Start

With the Quick Start standby mode you can simply flip open the LCD screen to power up the camcorder in less than one second. You no longer have to miss shooting vital action while your camcorder powers up.

Dual Shot



Dual Shot

By setting all controls to automatic Dual Shot mode allows you to capture great action sequences and still shots using just 2 buttons – the record button and the photo button.

Share your movies

With Canon HD and SD camcorders, it's easy to share the movies you make...

Watching movies on a television

To showcase your movies directly from the camcorder, simply connect your LEGRIA HD camcorder to a compatible HDTV via a single HDMI™ cable*. Additionally, some HDTVs and Blu-ray players can now play HD footage directly from a memory card. Both HD and SD camcorders can connect and playback on normal TVs using the included AV cable. Alternatively, for even better HD image quality, use the component cable included with all LEGRIA Full HD camcorders.



Sharing via the internet

All Canon flash and Hard Disk Drive camcorders – including LEGRIA FS and HF- series models – are supplied with PIXELA ImageMixer PC software. PIXELA allows you to convert your footage into a format suitable for internet sharing sites such as YouTube, Vimeo and Flickr.



Podcast your Movies with Canon image Gateway

If you have friends that own an iPod, Canon now offers an online service for podcasting your videos in a few simple steps. First use the supplied PIXELA software to convert your HD footage to the correct file type, then log on to Canon image Gateway and follow the simple instructions to upload your movie. 1GB of online storage space is provided to upload your movies.

DVDs or Blu-ray discs are still a convenient way to show and share video for many people. If you have a PC, you can even use PIXELA to burn these discs.



DW-100

If you prefer not to use a PC, LEGRIA flash memory camcorders are compatible with the DW-100, Canon's easy-to-use standalone DVD burner. Burn Standard Definition movies from LEGRIA FS camcorders or, if you're using a LEGRIA Full HD HF-series model, burn AVCHD DVDs that are Blu-ray compatible**. Simply connect your camcorder, select your footage, and burn.

Editing movies before sharing

Connect your camcorder to a computer and open up a whole new world of creative possibilities. Canon camcorders record in formats that are compatible with Mac OS and Windows operating systems and a variety of popular editing programs: from beginner packages to professional-level software.



* HDMI cable sold separately.

**HD Movies must be recorded in FXP mode or lower.

iTunes and iPod are trademarks of Apple Inc. registered in the U.S. and other countries.

Windows is a registered trademark of Microsoft Corporation in the United States and other countries.

Mac and Mac OS are trademarks of Apple Inc., registered in the U.S. and other countries.

Camcorder accessories

When you are ready to do more with your LEGRIA camcorder you can easily add accessories. Choose genuine Canon accessories for quality assurance.

Wide Angle Lenses – fit more in the frame

When shooting in confined indoor spaces, Canon's Wide-Angle Lenses (WD-H58, WD-H43, WD-H37 II) let you fit more of the room into a video frame. You can also capture large groups of friends or panoramic landscapes with ease.



Directional microphones – capture better sound

To pick out a specific conversation from a noisy crowd, invest in a directional microphone (DM-100, DM-50). Adding an optional microphone improves the quality of your movies by capturing even better sound.



Tele lenses – capture far away action

If you are some distance away from where the action is taking place, a Canon Tele Converter (TL-H58, TL-H43, TL-H37) makes everything you're shooting appear much closer: up to 1.5x – fantastic for sporting events or concerts



Video Lights

With a Canon external Video Light (VFL-2, VL-3, VL-5,), you can keep on shooting as the sunlight starts to fade, or even indoors in dim environments. Accessory video lights are powered via a camcorder's accessory shoe with no need for additional batteries.



Long-life batteries

For lengthy shooting days, a long-life, high-capacity battery gives you hours of extra shooting time between charges. There is a range to choose from.



WP-V1 – waterproof case

For adventure trips that may include underwater diving or even skiing, the WP-V1 waterproof case is a great way to protect your LEGRIA HF20 or HF200 camcorder. It is robust and waterproof to 40m depth. For diving, a special Underwater scene mode can be activated to control the colour balance in a way that is ideally suited to shooting beautiful HD footage underwater.



LEGRIA HF20

Start Freecording in Full HD



For style leaders who won't compromise on quality.

With the stylish and compact LEGRIA HF20, store over 12 hours of HD movies to a large, 32GB internal memory. Perfect for carrying everywhere, features like Pre REC and Video Snapshot make high quality movie-making easy. Versatile Dual Flash Memory also gives you the option of shooting directly to SDHC memory cards, so you can instantly share your movies.



- Shoot Full HD movies (up to 24Mbps) to SDHC card or 32GB internal memory, with Dual Flash Memory
- Canon HD Camera System: 3.3MP Full HD CMOS; Canon HD Video Lens (15x optical zoom); DIGIC DV III
- Instant AF, Super Range OIS and Face Detection Technology (capturing up to 35 faces) combine to make shooting great videos easy
- Compact and stylish
- Video Snapshot: create a montage of clips with your choice of music
- Ready to go: Pre REC and Quick Start
- x.v.Colour; 25p Cinema Mode
- 3.3MP photos: features include Dual Shot and Photo Burst
- Comprehensive audio control
- PIXELA ImageMixer software supplied; compatible with DW-100 DVD burner



LEGRIA HF200

Discover the world of Freecording in Full HD



For anyone who wants to just shoot and share in Full HD – online or offline.

Small enough to carry with you everywhere, the LEGRIA HF200 records stunning Full HD movies straight to SDHC memory card. Memory cards are perfect for passing on to friends. They're also an easy way to upload movies to the web – simply insert a card into any PC with a compatible card reader. The LEGRIA HF200 is a perfect camcorder for anyone who wants to share stunning high-quality HD movies easily.



- Shoot Full HD movies (up to 24Mbps) to SDHC memory card
- Canon HD Camera System: 3.3MP Full HD CMOS; Canon HD Video Lens (15x optical zoom); DIGIC DV III
- Instant AF, Super Range OIS and Face Detection Technology (capturing up to 35 faces) combine to make shooting great videos easy
- Compact and stylish
- Video Snapshot: create a montage of clips with your choice of music
- Ready to go: Pre REC and Quick Start
- x.v.Colour; 25p Cinema Mode
- 3.3MP photos: features include Dual Shot and Photo Burst
- Comprehensive audio control
- PIXELA ImageMixer software supplied; compatible with DW-100 DVD burner



LEGRIA HF S10

A fusion of unrivalled HD quality and control



For anyone who demands the very highest imaging quality for professional-looking results.

Featuring Canon's best-ever Canon HD Camera system – combining a 10x optical zoom HD video lens, an 8.0MP Full HD CMOS sensor, and the powerful DIGIC DV III processor – the LEGRIA HF S10 delivers the highest standards of imaging that are comparable to professional camcorders. For the ultimate in image quality, captured images are actually larger than 1920 x 1080 Full HD.



In addition to a host of user-friendly functions, the HF S10 gives you direct access to professional level manual controls using the customisable Control Dial and Custom Key. To achieve the look you want, features such as Colour Peaking aid manual focusing while Zebra Assist allows you to easily spot over-exposure. The AGC levels can even be set so signal gain and light levels can be faithfully reproduced when shooting at night. You can take fantastic 8 Megapixel still photographs too.

- Ultimate image quality: 8.0MP Full HD CMOS, Canon HD Video Lens, DIGIC DV III processor
- Dual Flash Memory: record to 32GB built-in memory or directly to SDHC memory cards, at up to 24Mbps
- Rapid, accurate Instant AF and Super Range OIS
- Custom Key and Control Dial; advanced shooting features include AGC limit adjustment
- Video Snapshot, Face Detection Technology and Pre REC
- x.v.Colour; 25p Cinema Mode
- Enhanced photo options include Dual Shot, Photo Burst and 8.0MP stills
- Comprehensive audio control
- Expandable system: mini Advanced Accessory Shoe and other accessories available
- PIXELA editing software supplied; compatible with DW-100 DVD burner



LEGRIA HF S100

Supreme quality, advanced control



For anyone who wants to make superb professional looking HD movies, then share them quickly and easily.

Capturing superb movies larger in size than Full HD, and then recording at 1920 x 1080, the LEGRIA HF S100 employs Canon's best-ever HD Camera system to achieve simply stunning results.

Shooting straight to removable SDHC memory cards, movies are ready and waiting to be shared. Play your movie immediately in any compatible device: a computer or an HDTV. The HF S100 offers a suite of advanced controls to assist in manual focusing and exposure. Zebra Assist, Colour Peaking and AGC limits help you create professional-looking high quality HD movies that wouldn't look out of place on a cinema screen.



- Ultimate image quality: 8.0MP Full HD CMOS, Canon HD Video Lens, DIGIC DV III processor
- Store Full HD movies directly to SDHC memory cards, at up to 24Mbps
- Rapid, accurate Instant AF and Super Range OIS
- Custom Key and Control Dial; advanced shooting features include AGC limit adjustment
- Video Snapshot, Face Detection Technology and Pre REC
- x.v.Colour; 25p Cinema Mode
- Enhanced photo options include Dual Shot, Photo Burst and 8.0MP stills
- Comprehensive audio control
- Expandable system: mini Advanced Accessory Shoe and other accessories available
- PIXELA editing software supplied; compatible with DW-100 DVD burner



LEGRIA HG21

Ready for the challenge



For those who want to be ready for anything.

The LEGRIA HG21 lets you keep recording for longer. Featuring a wealth of hard disk space as well as removable memory cards for even more capacity, the LEGRIA HG21 can hold up to 45 hours of HD movie footage – enough for over 25 feature length movies – on a 120GB Hard Disk Drive. Choosing to shoot directly to a memory card means you can instantly share your visions with your friends. Alternatively, watch your movies on your HDTV via the HDMI connection, transfer them on to your computer for editing, or even burn them to Blu-ray disc.



- Shoot over 45 hrs of HD movies to a 120Gb Hard Disk Drive
- Dual Recording: record to HDD or removable memory card
- 1920x1080 Full HD recording at superior quality (24Mbps)
- Canon HD Camera System: 3.3MP Full HD CMOS, Canon HD Video Lens (12x optical zoom) and DIGIC DV II
- Super Range OIS and Instant AF
- Freedom to create – 25p Cinema Mode and 11 Program AE modes
- Microphone input and manual audio control for superior sound
- Mini Advanced Accessory Shoe; HDMI™ with CEC support; component output
- Multiangle Vivid LCD and colour EVF
- Manage, edit and share movies using supplied software and burn Blu-ray discs.



LEGRIA HG20

Your Full HD adventure starts here



For those who want to remember the adventure.

The LEGRIA HG20 features an impressive 60GB of hard disk space as well as removable memory cards for even more capacity. You can shoot over 22 hours of highest quality video footage and supplement with additional memory cards if you need. Share your movies with your friends over the internet or watch your movies on your HDTV via the HDMI connection.



- Shoot over 22 hrs with 60Gb Hard Disk Drive.
- Dual Recording: record to HDD or removable memory card
- 1920x1080 Full HD recording at superior quality (24Mbps)
- Canon HD Camera System: 3.3MP Full HD CMOS, Canon HD Video Lens (12x optical zoom) and DIGIC DV II
- Super Range OIS and Instant AF
- Freedom to create – 25p Cinema Mode and 11 Program AE modes
- Microphone input and manual audio control for superior sound
- Mini Advanced Accessory Shoe; HDMI™ with CEC support; component output
- Manage, edit and share movies using supplied software – even burn Blu-ray discs



LEGRIA HV40

Get creative – in High Definition



For aspiring filmmakers and anyone who wants to try their hand at editing.

To realise your creative vision in High Definition, the LEGRIA HV40 is the tool of choice. Successor to the award-winning HV30 – named 'European HD Camcorder' of the year in 2008, by the European Imaging and Sound Association (EISA) – the LEGRIA HV40 gives you amazing flexibility. The customisable Control Dial lets you take control over different manual settings.



- Canon HD Camera System for outstanding HDV1080i movies
- Instant AF: fast and accurate auto focus
- Genuine Canon HD Video Lens, with 10x optical zoom and Super Range OIS
- Creative manual control: Custom Key and user assignable Control Dial
- Advanced Accessory Shoe, manual audio control and a full range of connections, including HDMI
- 2.7" Multiangle Vivid LCD screen
- 50i plus cinematic 25p shooting, with CINE image mode for a film look
- Advanced photo features: shoot simultaneous video and 2.07MP stills
- AV input and analogue-to-digital converter – great for storing old movies
- Optional lens adaptors and BP-2L24H long life battery

HDV



HDMI



Why choose Standard Definition?

Meet Canon's Standard Definition LEGRIA FS series: Our smallest, handiest camcorders.

They go where you go

LEGRIA Standard Definition camcorders record to flash memory internally or on a removable memory card. The tiny physical size of this memory type means the camcorders are smaller and more compact. LEGRIA SD camcorders are truly pocket-size so you can always take yours with you

Share your vision

The efficient file size of SD movies mean that they're perfect for uploading to a computer or the internet - easily share movies on popular video sharing sites such as YouTube or create your very own podcasts to send to all your friends with your free Canon image Gateway account.

Simple shooting

Canon's LEGRIA FS series of standard definition camcorders have many of the features seen on Canon's HD camcorders - such as Pre REC and Video Snapshot - making it easier than ever to create movies worth watching. The user-friendly menu options make these camcorders great for getting into movie making.

Advanced Zoom

Get closer to the action with Canon's exclusive Advanced Zoom system. Combining the power of the DIGIC DV II processor and the quality of a genuine Canon Video Lens, Advanced Zoom enables smooth zooming throughout the range from wide-angle up to 45x zoom with consistently high image quality.

Easy to playback

Movies made on a Standard Definition camcorder can be played back on any TV. Just connect the camcorder directly to your television using the AV cable (included). If you have a modern HDTV, it should automatically resize the picture to fit the screen.



LEGRIA FS22 FS21 FS20 FS200

Discover new, fun ways to record



For anyone who wants to capture their experiences and share the most exciting moments online.

Take your world with you – the LEGRIA FS series lets you capture a video diary of your day from the palm of your hand. These incredibly lightweight camcorders shoot great looking SD movies and have a whole range of features that make creating videos effortless fun. Their tiny size means you can take them with you wherever you go.

The LEGRIA FS22, LEGRIA FS21 and LEGRIA FS20 feature Dual Flash Memory so you can choose to shoot directly to the internal memory or to a removable memory card that makes sharing your creations quick and easy. A range of memory sizes are available – shoot for up to 21 hours with 32GB, 10 hours with 16GB, or 5 hours with 8GB – you can select the camcorder that best suits your needs. Alternatively shoot straight to memory card with the LEGRIA FS200.

- Take anywhere: incredibly small and light, the FS200 even comes in four colours*
- Video Snapshot mode: one-touch video capture lets you easily create movie montages to share
- Megapixel CCD for superior image quality (exc. LEGRIA FS200)
- Pre REC feature ensures you never miss the shot
- Intelligent battery: shoot for up to 3.5 hours on a single charge; recharge an extra hour in only 20 minutes
- Microphone input and headphone jack
- Dual Shot: with the camcorder in control, shoot high-quality video and photos without switching modes
- PIXELA editing software supplied

*availability may vary





LEGRIA FS22

- 32GB internal drive or shoot to SDHC memory card
- 45x Advanced Zoom



45x
Advanced Zoom



DUAL
FLASH
MEMORY

MEGA PIXEL



LEGRIA FS21

- 16GB internal drive or shoot to SDHC memory card
- 45x Advanced Zoom



45x
Advanced Zoom



DUAL
FLASH
MEMORY

MEGA PIXEL



LEGRIA FS20

- 8GB internal drive or shoot to SDHC memory card
- 45x Advanced Zoom



45x
Advanced Zoom



DUAL
FLASH
MEMORY

MEGA PIXEL



LEGRIA FS200

- Four colours to match your style*
- Straight to SDHC memory cards
- 41x Advanced Zoom



41x
Advanced Zoom



SDHC™



MIC Jack

**LEGRIA HF20****LEGRIA HF200****LEGRIA HF510**

VIDEO SYSTEM			
Recording Medium	Dual Flash Memory (32Gb internal + SDHC card slot)	Removeable memory card (SD/SDHC)	Dual Flash Memory (32Gb internal + SDHC card slot)
MaxRecording Time	Variable total, depending on memory card size* Internal memory: 12hrs 15mins ¹ 16Gb SDHC card: 6hrs 05mins ¹	Variable, depending on memory card size* 16Gb SDHC card: 6hrs 05mins ¹	Variable total, depending on memory card size* Internal memory: 12hrs 15mins ¹ 16Gb SDHC card: 6hrs 05mins ¹
SENSOR			
Type	1/4" CMOS	1/4" CMOS	1/2.6" CMOS
Total pixels	3.89 megapixel	3.89 megapixel	8.59 megapixel
Effective Pixels: Movie	2.99 megapixels	2.99 megapixels	6.01 megapixels
Effective Pixels: Still	3.31 megapixels (4:3 mode)	3.31 megapixels (4:3 mode)	8.02 megapixels (4:3 mode)
Filter	RGB Primary Colour Filter	RGB Primary Colour Filter	RGB Primary Colour Filter
LENS			
Optical Zoom	15x	15x	10x
Digital Zoom	300x / 60x (selectable)	300x / 60x (selectable)	200x / 40x (selectable)
Digital Tele-converter	—	—	YES (1.7x)
Focal length	4.1-61.5mm	4.1-61.5mm	6.4-64mm
35mm Equivalent Focal Length	MOVIE: Approx 39.5-592.5 mm STILL: Approx 39.5-592.5 mm	MOVIE: Approx 39.5-592.5 mm STILL: Approx 39.5-592.5 mm	MOVIE: Approx 43.5-435 mm STILL: Approx 39.9-399 mm (4:3)
Maximum aperture	f1.8 to f3.2	f1.8 to f3.2	f1.8 to f3.0
Minimum focusing distance	10mm	10mm	10mm
Image Stabilizer	Super Range Optical Image Stabilizer	Super Range Optical Image Stabilizer	Super Range Optical Image Stabilizer
Filter diameter	37mm	37mm	58mm
Wide Attachment	YES (optional WD-H37 II)	YES (optional WD-H37 II)	YES (optional WD-H58)
IMAGE PROCESSOR			
Image Processor	DIGIC DV III	DIGIC DV III	DIGIC DV III
Face Detection Technology	YES	YES	YES
LCD			
Screen size	2.7" widescreen Multiangle Vivid LCD	2.7" widescreen Multiangle Vivid LCD	2.7" widescreen Multiangle Vivid LCD
Pixels	211,000 pixels	211,000 pixels	211,000 pixels
Manual adjustment	Brightness, backlight	Brightness, backlight	Brightness, backlight
Temporary Underscan	—	—	YES
VIEWFINDER			
Screen size	N/A	N/A	N/A
Pixels	N/A	N/A	N/A
MINIMUM ILLUMINATION			
Minimum Lux.	Approx. 0.4 lux (Night Mode)	Approx. 0.4 lux (Night Mode)	Approx. 0.3 lux (Night Mode)
Night Mode	YES	YES	YES
Auto Gain Control limit adjustment	—	—	YES
FOCUS			
Auto/Manual	YES / YES	YES / YES	YES / YES
Control	AUTO: Face Priority AF/Instant AF/TV AF MANUAL: Joystick	AUTO: Face Priority AF/Instant AF/TV AF MANUAL: Joystick	AUTO: Face Priority AF/Instant AF/TV AF MANUAL: Joystick, Control Dial
Manual Focus Assist	YES (Magnification, Face Assist)	YES (Magnification, Face Assist)	YES (Magnification, Face Assist, Colour Peaking)
AE MODE			
Program AE	13 Dual Shot, P, Av, Tv, CINE, Portrait, Sports, Night, Snow, Beach, Sunset, Spotlight, Fireworks	13 Dual Shot, P, Av, Tv, CINE, Portrait, Sports, Night, Snow, Beach, Sunset, Spotlight, Fireworks	13 Dual Shot, P, Av, Tv, CINE, Portrait, Sports, Night, Snow, Beach, Sunset, Spotlight, Fireworks
Zebra	NO	NO	YES
BACKLIGHT COMPENSATION			
Backlight Compensation	YES	YES	YES
WHITE BALANCE			
Type	TTL	TTL	TTL
Auto	YES	YES	YES
Set/Presets	YES (Daylight, Shade, Cloudy, Tungsten, Fluorescent, Fluorescent H)	YES (Daylight, Shade, Cloudy, Tungsten, Fluorescent, Fluorescent H)	YES (Daylight, Shade, Cloudy, Tungsten, Fluorescent, Fluorescent H)
SHUTTER SPEED			
Maximum	1/2000th sec.	1/2000th sec.	1/2000th sec.
Slow	1/2 sec.	1/2 sec.	1/6 sec.
DIGITAL EFFECT			
Fade	Auto Fade, Wipe	Auto Fade, Wipe	Auto Fade, Wipe
Effect	Black & White, Sepia, Art	Black & White, Sepia, Art	Black & White, Sepia, Art
IMAGE QUALITY ADJUSTMENT			
Image Effects	Vivid, Neutral, Low Sharpening, Soft Skin Detail	Vivid, Neutral, Low Sharpening, Soft Skin Detail	Vivid, Neutral, Low Sharpening, Soft Skin Detail
Custom Functions	Brightness, Contrast, Sharpness, Colour Depth	Brightness, Contrast, Sharpness, Colour Depth	Brightness, Contrast, Sharpness, Colour Depth
CUSTOM KEY			
Custom Key	—	—	YES (plus Control Dial)
STILL IMAGE			
Capture image size	2304 x 1296, 2100 x 1575, 1600 x 1200, 640 x 480	2304 x 1296, 2100 x 1575, 1600 x 1200, 640 x 480	3264 x 2456, 3264 x 1840, 1920 x 1440, 640 x 480
Continuous shooting mode	YES (Normal and High-speed)	YES (Normal and High-speed)	YES (Normal and High-speed)
Auto Exposure Bracketting	YES	YES	YES
Simultaneous Photo Recording	YES	YES	YES
Selecting AF Frame Function	YES	YES	YES
Histogram	YES	YES	YES
Photo Button	YES	YES	YES
Photo Burst	YES	YES	YES
SELF TIMER			
Self timer	10 sec 2 sec with wireless remote	10 sec 2 sec with wireless remote	10 sec 2 sec with wireless remote
REC. REVIEW/REC. SEARCH			
REC. review/REC. search	NO/NO	NO/NO	NO/NO



LEGRIA HF20



LEGRIA HF200



LEGRIA HF510

RECORDING MODE			
Recording mode	5 recording quality modes: ⁵ MXP: 1920x1080, 24Mbps; ⁴ FXP: 1920x1080, 17Mbps; ⁴ XP+: 1440x1080, 12Mbps; SP: 1440x1080, 7Mbps; LP: 1440x1080, 5Mbps	5 recording quality modes: ⁵ MXP: 1920x1080, 24Mbps; ⁴ FXP: 1920x1080, 17Mbps; ⁴ XP+: 1440x1080, 12Mbps; SP: 1440x1080, 7Mbps; LP: 1440x1080, 5Mbps	5 recording quality modes: ⁵ MXP: 1920x1080, 24Mbps; ⁴ FXP: 1920x1080, 17Mbps; ⁴ XP+: 1440x1080, 12Mbps; SP: 1440x1080, 7Mbps; LP: 1440x1080, 5Mbps
Extended Recording mode (ELP mode)	—	—	—
Progressive shooting mode	YES (25p)	YES (25p)	YES (25p)
CINE image mode	YES	YES	YES
x.v.Color	YES	YES	YES
Video Snapshot	YES	YES	YES
Dual Shot	YES	YES	YES
Pre REC	YES	YES	YES
Colour Bars and Test Tone	—	—	YES
SEARCH			
Still image	NO	NO	NO
Date	YES (date select, calendar, timeline, Face Timeline, Face Jump)	YES (date select, calendar, timeline, Face Timeline, Face Jump)	YES (date select, calendar, timeline, Face Timeline, Face Jump)
MEMORY CARD			
Multi Media Card	NO	NO	NO
Secure Digital Card	SD / SDHC	SD / SDHC	SD / SDHC
Movie Recording	YES	YES	YES
Internal Data Transfer	MOVIE: Yes (internal memory to card) STILLS: Yes (internal memory to card)	N/A	MOVIE: Yes (internal memory to card) STILLS: Yes (internal memory to card)
AUDIO			
System	Dolby Digital 2ch (AC-3 2ch)	Dolby Digital 2ch (AC-3 2ch)	Dolby Digital 2ch (AC-3 2ch)
Manual Rec. level control	YES	YES	YES
Audio Dubbing	NO	NO	NO
TERMINAL			
Headphone	YES	YES	YES
Microphone	YES	YES	YES
USB	YES (USB 2.0 Hi Speed)	YES (USB 2.0 Hi Speed)	YES (USB 2.0 Hi Speed)
DV	NO	NO	NO
Direct Print	YES	YES	YES
Analogue-in	NO	NO	NO
AV	YES	YES	YES
S-video	NO	NO	NO
Component	YES	YES	YES
HDMI	YES (HDMI™ Mini Connector: v1.3, CEC supported)	YES (HDMI™ Mini Connector: v1.3, CEC supported)	YES (HDMI™ Mini Connector: v1.3, CEC supported)
LANC	—	—	—
Built-in charger	YES	YES	YES
QUICK START			
Quick Start	YES (using LCD screen)	YES (using LCD screen)	YES (using LCD screen)
ACCESSORY SHOE			
Accessory shoe	YES (mini Advanced Accessory Shoe)	YES (mini Advanced Accessory Shoe)	YES (mini Advanced Accessory Shoe)
BUILT-IN VIDEO LIGHT			
Built-in Video light	YES (white LED)	YES (white LED)	YES (white LED)
BUILT-IN FLASH			
Built-in Flash	YES	YES	YES
PC CONNECTION KIT			
Digital Video Solution Disk	YES (v32)	YES (v32)	YES (v32)
DV Network Solution Disk	NO	NO	NO
Application software	Yes (PIXELA ImageMixer™ 3 SE, Music Transfer utility)	Yes (PIXELA ImageMixer™ 3 SE, Music Transfer utility)	Yes (PIXELA ImageMixer™ 3 SE, Music Transfer utility)
USB cable	YES	YES	YES
WIRELESS CONTROLLER			
Wireless controller	YES	YES	YES
BATTERY PACK			
Type	Lithium Ion	Lithium Ion	Lithium Ion
Intelligent Battery System	YES	YES	YES
Battery included in the kit	BP-809 (B)	BP-809 (B)	BP-807
Max recording time (included battery) ¹	1hr 40mins	1hr 40mins	Approx 1hr 45mins (normal LCD, LP mode)
Quick Charge	NO	NO	NO
Long life Battery	BP-827	BP-827	BP-827
Longer recording time ²	5hrs 20mins	5hrs 10mins	Approx. 5hr 20mins
DIMENSIONS			
W x H x D	70 x 62 x 124mm	70 x 62 x 124mm	70 x 69 x 136mm
Weight	Approx. 340g	Approx. 340g	Approx. 450g

Specifications are subject to change without notice

¹ LP recording mode

² using EVF (normal LCD brightness if no EVF) and optional long life BP

³ Advanced Zoom ON, 16:9 recording mode, wide end

⁴ Class 4 or higher SDHC card required for 1920x1080 recording; Class 2 or higher SDHC card recommended for other recording modes; Memory card not supplied

⁵ Variable bit rate used in all recording modes

**LEGRIA HF510****LEGRIA HG21****LEGRIA HG20**

VIDEO SYSTEM			
Recording Medium	Removeable memory card (SD/SDHC)	Dual Memory (120Gb HDD+SDHC card slot)	Dual Memory (60Gb HDD+SDHC card slot)
Max Recording Time	Variable, depending on memory card size.* 16Gb SDHC card: 6hrs 05mins†	Variable total, depending on memory card size* Internal HDD: 45hrs 55mins† 16Gb SDHC card: 6hrs 05mins†	Variable total, depending on memory card size* Internal HDD: 22hrs 55mins† 16Gb SDHC card: 6hrs 05mins†
SENSOR			
Type	1/2.6" CMOS	1/3.2" CMOS	1/3.2" CMOS
Total pixels	8.59 megapixel	3.31 megapixel	3.31 megapixel
Effective Pixels: Movie	6.01 megapixels	2.07 megapixels	2.07 megapixels
Effective Pixels: Still	8.02 megapixels (4:3 mode)	2.76 megapixels (4:3 mode)	2.76 megapixels (4:3 mode)
Filter	RGB Primary Colour Filter	RGB Primary Colour Filter	RGB Primary Colour Filter
LENS			
Optical Zoom	10x	12x	12x
Digital Zoom	200x / 40x (selectable)	200x / 40x (selectable)	200x / 40x (selectable)
Digital Tele-converter	YES (1.7x)	—	—
Focal length	6.4-64mm	4.8-57.6mm	4.8-57.6mm
35mm Equivalent Focal Length	MOVIE: Approx 43.5-435 mm STILL: Approx 39.9-399 mm (4:3)	MOVIE: Approx 42.9-514.8 mm STILL: Approx 39.3-471.6 mm (4:3 mode)	MOVIE: Approx 42.9-514.8 mm STILL: Approx 39.3-471.6 mm (4:3 mode)
Maximum aperture	f1.8 to f3.0	f1.8 to f3.0	f1.8 to f3.0
Minimum focusing distance	10mm	10mm	10mm
Image Stabilizer	Super Range Optical Image Stabilizer	Super Range Optical Image Stabilizer	Super Range Optical Image Stabilizer
Filter diameter	58mm	37mm	37mm
Wide Attachment	YES (optional WD-H58)	YES (optional WD-H37 II)	YES (optional WD-H37 II)
IMAGE PROCESSOR			
Image Processor	DIGIC DV III	DIGIC DV II	DIGIC DV II
Face Detection Technology	YES	—	—
LCD			
Screen size	2.7" widescreen Multiangle Vivid LCD	2.7" widescreen Multiangle Vivid LCD	2.7" widescreen LCD
Pixels	211,000 pixels	211,000 pixels	211,000 pixels
Manual adjustment	Brightness, backlight	Brightness, backlight	Brightness, backlight
Temporary Underscan	YES	NO	NO
VIEWFINDER			
Screen size	N/A	0.27" colour widescreen LCD	N/A
Pixels	N/A	123,000 pixels	N/A
MINIMUM ILLUMINATION			
Minimum Lux.	Approx. 0.3 lux (Night Mode)	Approx. 0.2 lux (Night Mode)	Approx. 0.2 lux (Night Mode)
Night Mode	YES	YES	YES
Auto Gain Control limit adjustment	YES	NO	NO
FOCUS			
Auto/Manual	YES / YES	YES / YES	YES / YES
Control	AUTO: Face Priority AF/Instant AF/TV AF MANUAL: Joystick, Control Dial	AUTO: Instant AF/TV AF MANUAL: Joystick	AUTO: Instant AF/TV AF MANUAL: Joystick
Manual Focus Assist	YES (Magnification, Face Assist, Colour Peaking)	YES (Magnification, Peaking)	YES (Magnification, Peaking)
AE MODE			
Program AE	13 Dual Shot, P, Av, Tv, CINE, Portrait, Sports, Night, Snow, Beach, Sunset, Spotlight, Fireworks	13 Easy, P, Av, Tv, CINE, Portrait, Sports, Night, Snow, Beach, Sunset, Spotlight, Fireworks	13 Easy, P, Av, Tv, CINE, Portrait, Sports, Night, Snow, Beach, Sunset, Spotlight, Fireworks
Zebra	YES	—	—
BACKLIGHT COMPENSATION			
Backlight Compensation	YES	YES	YES
WHITE BALANCE			
Type	TTL	TTL	TTL
Auto	YES	YES	YES
Set/Presets	YES (Daylight, Shade, Cloudy, Tungsten, Fluorescent, Fluorescent H)	YES (Daylight, Shade, Cloudy, Tungsten, Fluorescent, Fluorescent H)	YES (Daylight, Shade, Cloudy, Tungsten, Fluorescent, Fluorescent H)
SHUTTER SPEED			
Maximum	1/2000th sec.	1/2000th sec.	1/2000th sec.
Slow	1/6 sec.	1/2 sec.	1/2 sec.
DIGITAL EFFECT			
Fade	Auto Fade, Wipe	Auto Fade, Wipe	Auto Fade, Wipe
Effect	Black & White, Sepia, Art	Black & White, Sepia, Art	Black & White, Sepia, Art
IMAGE QUALITY ADJUSTMENT			
Image Effects	Vivid, Neutral, Low Sharpening, Soft Skin Detail	Vivid, Neutral, Low Sharpening, Soft Skin Detail	Vivid, Neutral, Low Sharpening, Soft Skin Detail
Custom Functions	Brightness, Contrast, Sharpness, Colour Depth	Brightness, Contrast, Sharpness, Colour Depth	Brightness, Contrast, Sharpness, Colour Depth
CUSTOM KEY			
Custom Key	YES (plus Control Dial)	NO	NO
STILL IMAGE			
Capture image size	3264 x 2456, 3264 x 1840, 1920 x 1440, 640 x 480	1920 x 1080, 2048 x 1536, 1440 x 1080, 848 x 480, 640 x 480	1920 x 1080, 2048 x 1536, 1440 x 1080, 848 x 480, 640 x 480
Continuous shooting mode	YES (Normal and High-speed)	YES (Normal and High-speed)	YES (Normal and High-speed)
Auto Exposure Bracketting	YES	YES	YES
Simultaneous Photo Recording	YES	YES	YES
Selecting AF Frame Function	YES	YES	YES
Histogram	YES	YES	YES
Photo Button	YES	YES	YES
Photo Burst	YES	—	—
SELF TIMER			
Self timer	10 sec 2 sec with wireless remote	10 sec 2 sec with wireless remote	10 sec 2 sec with wireless remote
REC. REVIEW/REC. SEARCH			
REC. review/REC. search	NO/NO	YES/NO	YES/NO



LEGRIA HF5100



LEGRIA HG21



LEGRIA HG20

RECORDING MODE			
Recording mode	5 recording quality modes: ⁵ MXP: 1920x1080, 24Mbps; ⁴ FXP: 1920x1080, 17Mbps; ⁴ XP+: 1440x1080, 12Mbps; SP: 1440x1080, 7Mbps; LP: 1440x1080, 5Mbps	5 recording quality modes: ⁵ MXP: 1920x1080, 24Mbps; ⁴ FXP: 1920x1080, 17Mbps; ⁴ XP+: 1440x1080, 12Mbps; SP: 1440x1080, 7Mbps; LP: 1440x1080, 5Mbps	5 recording quality modes: ⁵ MXP: 1920x1080, 24Mbps; ⁴ FXP: 1920x1080, 17Mbps; ⁴ XP+: 1440x1080, 12Mbps; SP: 1440x1080, 7Mbps; LP: 1440x1080, 5Mbps
Extended Recording mode (ELP mode)	—	—	—
Progressive shooting mode	YES (25p)	YES (25p)	YES (25p)
CINE image mode	YES	YES	YES
x.v.Color	YES	—	—
Video Snapshot	YES	—	—
Dual Shot	YES	—	—
Pre REC	YES	—	—
Colour Bars and Test Tone	YES	—	—
SEARCH			
Still image	NO	NO	NO
Date	YES (date select, calendar, timeline, Face Timeline, Face Jump)	YES (date select, calendar, timeline)	YES (date select, calendar, timeline)
MEMORY CARD			
Multi Media Card	NO	NO	NO
Secure Digital Card	SD / SDHC	SD / SDHC	SD / SDHC
Movie Recording	YES	YES	YES
Internal Data Transfer	N/A	MOVIE: Yes (HDD to card) STILLS: Yes (HDD to card)	MOVIE: Yes (HDD to card) STILLS: Yes (HDD to card)
AUDIO			
System	Dolby Digital 2ch (AC-3 2ch)	Dolby Digital 2ch (AC-3 2ch)	Dolby Digital 2ch (AC-3 2ch)
Manual Rec. level control	YES	YES	YES
Audio Dubbing	NO	NO	NO
TERMINAL			
Headphone	YES	YES	YES
Microphone	YES	YES	YES
USB	YES (USB 2.0 Hi Speed)	YES (USB 2.0 Hi Speed)	YES (USB 2.0 Hi Speed)
DV	NO	NO	NO
Direct Print	YES	YES	YES
Analogue-in	NO	NO	NO
AV	YES	YES	YES
S-video	NO	NO	NO
Component	YES	YES	YES
HDMI	YES (HDMI™ Mini Connector: v1.3, CEC supported)	YES (HDMI™ Mini Connector: v1.3, CEC supported)	YES (HDMI™ Mini Connector: v1.3, CEC supported)
LANC	—	—	—
Built-in charger	YES	YES	YES
QUICK START			
Quick Start	YES (using LCD screen)	YES	YES (using LCD screen)
ACCESSORY SHOE			
Accessory shoe	YES (mini Advanced Accessory Shoe)	YES (mini Advanced Accessory Shoe)	YES (mini Advanced Accessory Shoe)
BUILT-IN VIDEO LIGHT			
Built-in Video light	YES (white LED)	NO	NO
BUILT-IN FLASH			
Built-in Flash	YES	YES	YES
PC CONNECTION KIT			
Digital Video Solution Disk	YES (v32)	YES (v31)	YES (v31)
DV Network Solution Disk	NO	NO	NO
Application software	Yes (PIXELA ImageMixer™ 3 SE, Music Transfer utility)	Yes (PIXELA™ ImageMixer 3 SE)	Yes (PIXELA™ ImageMixer 3 SE)
USB cable	YES	YES	YES
WIRELESS CONTROLLER			
Wireless controller	YES	YES	YES
ANALOGUE DIGITAL CONVERTER			
Analogue Digital Converter	—	NO	NO
BATTERY PACK			
Type	Lithium Ion	Lithium Ion	Lithium Ion
Intelligent Battery System	YES	YES	YES
Battery included in the kit	BP-807	BP-807	BP-807
Max recording time (included battery)	Approx 1hr 45mins (normal LCD, LP mode)	60 mins	60 mins
Quick Charge	NO	—	—
Long life Battery	BP-827	BP-827	BP-827
Longer recording time ²	Approx. 5hrs 10mins	Approx. 5hrs 10mins	4hrs 55 mins
DIMENSIONS			
W x H x D	70 x 69 x 136mm	80 x 77 x 139mm	80 x 77 x 138mm
Weight	Approx. 450g	Approx. 490g	Approx. 465g

Specifications are subject to change without notice

¹ LP recording mode

² Using EVF (normal LCD brightness if no EVF) and optional long life BP

³ Advanced Zoom ON, 16:9 recording mode, wide end

⁴ Class 4 or higher SDHC card required for 1920x1080 recording; Class 2 or higher SDHC card recommended for other recording modes; Memory card not supplied

⁵ Variable bit rate used in all recording modes



LEGRIA HV40



LEGRIA FS22



LEGRIA FS21

VIDEO SYSTEM			
Recording Medium	HDV	Dual Flash Memory (32Gb internal)	Dual Flash Memory (16Gb internal)
Max Recording Time	HDV: 80mins DV: 120mins ¹	Variable total, depending on memory card size Internal memory: 20hrs 50mins ¹ 16Gb SDHC card: 10hrs 20mins ¹	Variable total, depending on memory card size Internal memory: 10hrs 20mins ¹ 16Gb SDHC card: 10hrs 20mins ¹
SENSOR			
Type	1/2.7" CMOS	1/6" Interlaced CCD	1/6" Interlaced CCD
Total pixels	2.96 megapixel	1.07 megapixel	1.07 megapixel
Effective Pixels: Movie	HDV: Approx 2.07 megapixels DV 16:9: Approx 2.07 megapixels DV 4:3: Approx 1.55 megapixels	710,000 pixels ³	710,000 pixels ³
Effective Pixels: Still	2.76 megapixels	800,000 pixels (4:3 mode)	800,000 pixels (4:3 mode)
Filter	RGB Primary Colour Filter	Complementary Colour Filter	Complementary Colour Filter
LENS			
Advanced Zoom	—	45x	45x
Optical Zoom	10x	37x	37x
Digital Zoom	200x / 40x (selectable)	2000x	2000x
Focal length	6.1 - 61mm	2.6 - 96.2mm	2.6 - 96.2mm
35mm Equivalent Focal Length	HDV: Approx 4.3-436 mm DV 16:9: Approx 4.3-436 mm DV 4:3: Approx 53.0-530mm STILL 16:9: Approx 4.3-436 mm STILL 4:3: Approx 40.0-400 mm	MOVIE: 41.7-1877mm ³ STILLS: 41.5 - 1536 mm (4:3 mode)	MOVIE: 41.7-1877mm ³ STILLS: 41.5 - 1536 mm (4:3 mode)
Maximum aperture	MOVIE: f1.8 to f3.0 STILLS: f2.8 to f3.0	f2.0 to f5.2	f2.0 to f5.2
Minimum focusing distance	10mm	10mm	10mm
Image Stabilizer	Super Range Optical Image Stabilizer	Electronic	Electronic
Filter diameter	43mm	N/A	N/A
Wide Attachment	YES (optional WD-H43)	NO	NO
IMAGE PROCESSOR			
Image Processor	DIGIC DV II	DIGIC DV II	DIGIC DV II
LCD			
Screen size	2.7" widescreen Multiangle Vivid LCD	2.7" widescreen colour LCD	2.7" widescreen colour LCD
Pixels	211,000 pixels	Approx. 123,000 pixels	Approx. 123,000 pixels
Manual adjustment	Brightness, backlight	Brightness, backlight	Brightness, backlight
VIEWFINDER			
Screen size	0.27 inch widescreen colour LCD	N/A	N/A
Pixels	123,000 pixels	N/A	N/A
MINIMUM ILLUMINATION			
Minimum Lux.	Approx 0.2 lux (Night Mode)	Approx. 1.5 lux (Night Mode) ³	Approx. 1.5 lux (Night Mode) ³
Night Mode	YES	YES	YES
FOCUS			
Auto/Manual	YES / YES	YES/YES	YES/YES
Control	AUTO: Instant AF/TV AF MANUAL: Joystick, Control Dial	Joystick operation (manual mode)	Joystick operation (manual mode)
Manual Focus Assist	Magnifying, Peaking	—	—
AE MODE			
Program AE	13 Auto, P, Av, Tv, CINE, Portrait, Sports, Night, Snow, Beach, Sunset, Spotlight, Fireworks	11 Dual Shot (Easy), P, Tv, Portrait, Sports, Night, Snow, Beach, Sunset, Spotlight, Fireworks	11 Dual Shot (Easy), P, Tv, Portrait, Sports, Night, Snow, Beach, Sunset, Spotlight, Fireworks
Zebra	YES	—	—
BACKLIGHT COMPENSATION			
Backlight Compensation	YES	YES	YES
WHITE BALANCE			
Type	TTL	TTL	TTL
Auto	YES	YES	YES
Set/Pre-set	YES (Daylight, Shade, Cloudy, Tungsten, Fluorescent, Fluorescent H)	YES (Daylight, Tungsten)	YES (Daylight, Tungsten)
SHUTTER SPEED			
Maximum	1/2000th sec.	1/2000th sec.	1/2000th sec.
Slow	1/2 sec.	1/6th sec.	1/6th sec.
DIGITAL EFFECT			
Fade	Auto Fade, Wipe	Auto Fade, Wipe	Auto Fade, Wipe
Effect	Black & White, Sepia, Art	Black & White, Sepia, Art, Mosaic	Black & White, Sepia, Art, Mosaic
IMAGE QUALITY ADJUSTMENT			
Image Effects	Vivid, Neutral, Low Sharpening, Soft Skin Detail	Vivid, Neutral, Soft Skin Detail	Vivid, Neutral, Soft Skin Detail
Custom Functions	Brightness, Contrast, Sharpness, Colour Depth	—	—
STILL IMAGE			
Capture image size	1920 x 1080, 2048 x 1536, 1440 x 1080, 848 x 480, 640 x 480	1152 x 864, 1152 x 648, 640 x 480 Internal memory or memory card	1152 x 864, 1152 x 648, 640 x 480 Internal memory or memory card
Continuous shooting mode	YES (Normal and High-speed)	YES	YES
Auto Exposure Bracketing	YES	YES	YES
Simultaneous Photo Recording	YES	NO	NO
Selecting AF Frame Function	YES	YES	YES
Histogram	YES	YES	YES
Photo Button	YES	YES	YES
Photo Burst	—	NO	NO
SELF TIMER			
Self timer	10 sec 2 sec with wireless remote	10 sec 2 sec with wireless remote	10 sec
REC. REVIEW/REC. SEARCH			
REC. review/REC. search	YES/NO	NO/NO	NO/NO



LEGRIA HV40



LEGRIA FS22



LEGRIA FS21

RECORDING MODE			
LP mode	YES (DV mode only)	3 recording quality modes (XP, SP, LP)	3 recording quality modes (XP, SP, LP)
Extended Recording mode (ELP mode)	NO	—	—
Progressive shooting mode	YES (25p)	—	—
CINE image mode	YES	—	—
Video Snapshot	—	YES	YES
Dual Shot	—	YES	YES
Pre REC	—	YES	YES
SEARCH			
Still image	NO	NO	NO
Date	YES	YES (date select, calendar, timeline)	YES (date select, calendar, timeline)
MEMORY CARD			
Multi Media Card	NO	NO	NO
Secure Digital Card	YES (MiniSD)	SD / SDHC	SD / SDHC
Movie Recording	NO	YES	YES
Internal Data Transfer	NO	MOVIE: Yes (internal memory to card) STILLS: Yes (internal memory to card)	MOVIE: Yes (internal memory to card) STILLS: Yes (internal memory to card)
AUDIO			
System	DV: PCM digital recording (48 kHz/16 bits or 32 kHz/12 bits, selectable) HDV: MPEG1 Audio Layer II (Sampling frequency: 48 kHz) (Bitrate: 384 kbps)	Dolby Digital 2ch (AC-3 2ch)	Dolby Digital 2ch (AC-3 2ch)
Manual Rec. level control	YES	NO	NO
Audio Dubbing	NO	NO	NO
TERMINAL			
Headphone	YES	YES	YES
Microphone	YES	YES	YES
USB	USB 2.0 Full Speed	USB 2.0 Hi Speed	USB 2.0 Hi Speed
DV	YES (In/Out)	NO	NO
Direct Print	YES (PictBridge)	YES	YES
Analogue-in	YES	NO	NO
AV	YES	YES	YES
S-video	NO	NO	NO
Component	YES	NO	NO
HDMI	YES	—	—
LANC	NO	—	—
Built-in charger	YES	YES	YES
QUICK START			
Quick Start	NO	YES (using LCD screen)	YES (using LCD screen)
ACCESSORY SHOE			
Accessory shoe	YES	NO	NO
BUILT-IN VIDEO LIGHT			
Built-in Video light	YES	YES (white LED)	YES (white LED)
BUILT-IN FLASH			
Built-in Flash	YES	NO	NO
PC CONNECTION KIT			
Digital Video Solution Disk	YES (v32)	YES (v32)	YES (v32)
DV Network Solution Disk	NO	NO	NO
Application software	NO	Yes (PIXELA™ ImageMixer 3 SE, Music Transfer utility)	Yes (PIXELA™ ImageMixer 3 SE, Music Transfer utility)
USB cable	YES	YES	YES
WIRELESS CONTROLLER			
Wireless controller	YES	YES	NO
ANALOGUE DIGITAL CONVERTER			
Analogue Digital Converter	YES	—	—
BATTERY PACK			
Type	Lithium-Ion	Lithium-Ion	Lithium-Ion
Intelligent Battery System	NO	YES	YES
Battery included in the kit	BP-2L13	BP-808	BP-808
Max recording time (included battery)	HDV: Approx 2hrs DV: Approx 2hrs 20mins	Approx 3hrs 35mins (normal LCD, LP mode)	Approx 3hrs 35mins (normal LCD, LP mode)
Quick Charge	NO	YES	YES
Long life Battery	BP-2L24H	N/A	N/A
Longer recording time ²	HDV: Approx 4hrs DV: Approx 4hrs 50mins ¹	N/A	N/A
DIMENSIONS			
W x H x D	88 x 82 x 138 mm	55 x 59 x 121 mm	55 x 59 x 121 mm
Weight	535g	225g	225g

Specifications are subject to change without notice

¹ LP recording mode

² Using EVF (normal LCD brightness if no EVF) and optional long life BP

³ Advanced Zoom ON, 16:9 recording mode, wide end

⁴ Class 4 or higher SDHC card required for 1920x1080 recording; Class 2 or higher SDHC card recommended for other recording modes; Memory card not supplied

⁵ Variable bit rate used in all recording modes



LEGRIA FS20



LEGRIA FS200

VIDEO SYSTEM		
Recording Medium	Dual Flash Memory (8Gb internal)	Removeable memory card (SD/SDHC)
MaxRecording Time	Variable total, depending on memory card size Internal memory: 5hrs 10mins ¹ 16Gb SDHC card: 10hrs 20mins ¹	Variable, depending on memory card size. 16Gb SDHC card: 10hrs 20mins ¹
SENSOR		
Type	1/6" Interlaced CCD	1/6" Interlaced CCD
Total pixels	1.07 megapixel	800,000 pixels
Effective Pixels: Movie	710,000 pixels ³	540,000 pixels ³
Effective Pixels: Still	800,000 pixels (4:3 mode)	530,000 pixels (4:3 mode)
Filter	Complementary Colour Filter	Complementary Colour Filter
LENS		
Advanced Zoom	45x	41x
Optical Zoom	37x	37x
Digital Zoom	2000x	2000x
Focal length	2.6 - 96.2mm	2.6 - 96.2mm
35mm Equivalent Focal Length	MOVIE: 41.7-1877mm ³ STILLS: 41.5 - 1536 mm (4:3 mode)	MOVIE: 40.5-1676mm ³ STILLS: 43.6 - 1613 mm
Maximum aperture	f2.0 to f5.2	f2.0 to f5.2
Minimum focusing distance	10mm	10mm
Image Stabilizer	Electronic	Electronic
Filter diameter	N/A	N/A
Wide Attachment	NO	NO
IMAGE PROCESSOR		
Image Processor	DIGICDVII	DIGICDVII
LCD		
Screen size	2.7" widescreen colour LCD	2.7" widescreen colour LCD
Pixels	Approx. 123,000 pixels	Approx. 123,000 pixels
Manual adjustment	Brightness, backlight	Brightness, backlight
VIEWFINDER		
Screen size	N/A	N/A
Pixels	N/A	N/A
MINIMUM ILLUMINATION		
Minimum Lux.	Approx. 1.5 lux (Night Mode) ³	Approx. 1.1 lux (Night Mode) ³
Night Mode	YES	YES
FOCUS		
Auto/Manual	YES/YES	YES/YES
Control	Joystick operation (manual mode)	Joystick operation (manual mode)
AE MODE		
Program AE	11 Dual Shot (Easy), P, Tv, Portrait, Sports, Night, Snow, Beach, Sunset, Spotlight, Fireworks	11 Dual Shot (Easy), P, Tv, Portrait, Sports, Night, Snow, Beach, Sunset, Spotlight, Fireworks
BACKLIGHT COMPENSATION		
Backlight Compensation	YES	YES
WHITE BALANCE		
Type	TTL	TTL
Auto	YES	YES
Set/Presets	YES (Daylight, Tungsten)	YES (Daylight, Tungsten)
SHUTTER SPEED		
Maximum	1/2000th sec.	1/2000th sec.
Slow	1/6th sec.	1/6th sec.
DIGITAL EFFECT		
Fade	Auto Fade, Wipe	Auto Fade, Wipe
Effect	Black & White, Sepia, Art, Mosaic	Black & White, Sepia, Art, Mosaic
IMAGE QUALITY ADJUSTMENT		
Image Effects	Vivid, Neutral, Soft Skin Detail	Vivid, Neutral, Soft Skin Detail
STILL IMAGE		
Capture image size	1152 x 864, 1152 x 648, 640 x 480 Internal memory or memory card	1024 x 768, 640 x 480
Continuous shooting mode	YES	NO
Auto Exposure Bracketing	YES	NO
Simultaneous Photo Recording	NO	NO
Selecting AF Frame Function	YES	YES
Histogram	YES	YES
Photo Button	YES	YES
Photo Burst	NO	NO
SELF TIMER		
Self timer	10 sec	10 sec
REC. REVIEW/REC. SEARCH		
REC. review/REC. search	NO/NO	NO/NO



LEGRIA FS20



LEGRIA FS200

RECORDING MODE		
LP mode	3 recording quality modes (XP, SP, LP)	3 recording quality modes (XP, SP, LP)
Extended Recording mode (ELP mode)	—	—
Video Snapshot	YES	YES
Dual Shot	YES	YES
Pre REC	YES	YES
SEARCH		
Still image	NO	NO
Date	YES (date select, calendar, timeline)	YES (date select, calendar, timeline)
MEMORY CARD		
Multi Media Card	NO	NO
Secure Digital Card	SD / SDHC	SD / SDHC
Movie Recording	YES	YES
Internal Data Transfer	MOVIE: Yes (internal memory to card) STILLS: Yes (internal memory to card)	N/A
AUDIO		
System	Dolby Digital 2ch (AC-3 2ch)	Dolby Digital 2ch (AC-3 2ch)
Manual Rec. level control	NO	NO
Audio Dubbing	NO	NO
TERMINAL		
Headphone	YES	YES
Microphone	YES	YES
USB	USB 2.0 Hi Speed	USB 2.0 Hi Speed
DV	NO	NO
Direct Print	YES	YES
Analogue-in	NO	NO
AV	YES	YES
S-video	NO	NO
Component	NO	NO
Built-in charger	YES	YES
QUICK START		
Quick Start	YES (using LCD screen)	YES (using LCD screen)
ACCESSORY SHOE		
Accessory shoe	NO	NO
BUILT-IN VIDEO LIGHT		
Built-in Video light	YES (white LED)	YES (white LED)
BUILT-IN FLASH		
Built-in Flash	NO	NO
PC CONNECTION KIT		
Digital Video Solution Disk	YES (v32)	YES (v32)
DV Network Solution Disk	NO	NO
Application software	Yes (PIXELA™ ImageMixer 3 SE, Music Transfer utility)	Yes (PIXELA™ ImageMixer 3 SE, Music Transfer utility)
USB cable	YES	YES
WIRELESS CONTROLLER		
Wireless controller	NO	NO
BATTERY PACK		
Type	Lithium-ion	Lithium-ion
Intelligent Battery System	YES	YES
Battery included in the kit	BP-808	BP-808
Max recording time (included battery)	Approx 3hrs 35mins (normal LCD, LP mode)	Approx 3hrs 35mins (normal LCD, LP mode)
Quick Charge	YES	YES
Long life Battery	N/A	N/A
Longer recording time ²	N/A	N/A
DIMENSIONS		
W x H x D	55 x 59 x 121 mm	55 x 59 x 121 mm
Weight	225g	225g

Specifications are subject to change without notice

¹ LP recording mode

² Using EVF (normal LCD brightness if no EVF) and optional long life BP

³ Advanced Zoom ON, 16:9 recording mode, wide end

⁴ Class 4 or higher SDHC card required for 1920x1080 recording; Class 2 or higher SDHC card recommended for other recording modes; Memory card not supplied

⁵ Variable bit rate used in all recording modes

you can
Canon

Canon Ireland
www.canon.ie

Canon UK Ltd.
www.canon.co.uk

Canon Inc
www.canon.com

Canon Europa NV
www.canon-europe.com

English Edition 0131W964



© 1986 Panda symbol WWF ® WWF Registered Trademark

© Canon Europa NV 2009