

Sennheiser tour-guide systems.
Created to
inspire people.



Tour-guide systems

 **SENNHEISER**



Your success speaks for itself.

Numerous products, machines and situations are first brought to life and correctly understood with clear words and the right sound. Whether it is a guided tour, trade fair or conference – the communication of information always plays a key role.

Every event is different and has its own specific needs. For precisely this reason the audio transmission system must be perfectly suited to the event. The demands made on the sound quality for a factory tour, for example, differ from those for a product training session, press conference or trade fair event. If everything is optimally tuned, your event is sure to be a resounding success.

You wish to organise several guided tours simultaneously – without the tour-guide systems interfering with each other?

Your visitors must be able to easily understand every word, even in loud surroundings?

You need excellent sound and absolutely clear speech intelligibility throughout the event, as even the least disturbance or difficulty in understanding is unthinkable?

You are planning regular guided tours which should be entertaining and inspiring, even without a tour guide?

You want additional interpreters to accompany the tour – and be able to join in the conversation?

We have the answer.

Whichever requirements you have for your event – Sennheiser has the optimum solution: high-quality, versatile tour-guide systems.

Sennheiser: quality you can hear.

Sennheiser has been at home in the world of sound for more than 60 years. With this know-how and experience we develop first-class, reliable audio solutions for a wide range of uses.

Wide range of possibilities. Enthusiastic visitors.

Here are only a few examples of the numerous possible uses of the Sennheiser tour-guide systems.



Factory tour. You wish to take several visitor groups through your production facility simultaneously? The machines work fast – and produce not only unique products, but also intensive background noise. The tour guide should be able to talk calmly at a normal level – and visitors should be able to understand every single word during the entire tour. A powerful system with excellent speech intelligibility is called for here. Sennheiser’s tourguide EK 1039, for example.



Trade fair. At your trade fair stand three groups are listening to different lectures simultaneously. Some people need an additional hearing aid. Every participant should hear all that is being said – and the tour-guide systems of the different groups should not interfere with each other. An easy-to-use digital system is called for here. Sennheiser’s tourguide 2020-D, for example.



Exhibition. You want to make your museum individually accessible to as many visitors as possible? Flexibly and nevertheless with a structured, exciting and explanatory audio accompaniment. Tour guides do not fit into your concept. An intelligent, automated system is called for here. Sennheiser’s guidePORT, for example.

Press conference. You wish to present your company at its best. Numerous journalists have been invited. You simply cannot afford equipment failure. Transmission problems or unintelligible phrases not only give a bad impression, they prevent participants from gaining the whole picture. A system with outstanding sound quality is called for here. Sennheiser’s tourguide EK 1039, for example.



**Connect. Communicate.
Amplify. Understand.**

Whether it is a quiet or noisy environment, a small or large group, several different groups or just one, with or without an interpreter, with or without a tour guide, audio in combination with visual applications ... Sennheiser is the right partner for reliable transmission of information.

For customized solutions and individual consultation please contact your Sennheiser representative.



**Discover our versatile
visitor guidance/information systems:**



tourguide 2020-D



tourguide EK 1039



guidePORT

tourguide 2020-D: versatile, comfortable audio transmission.

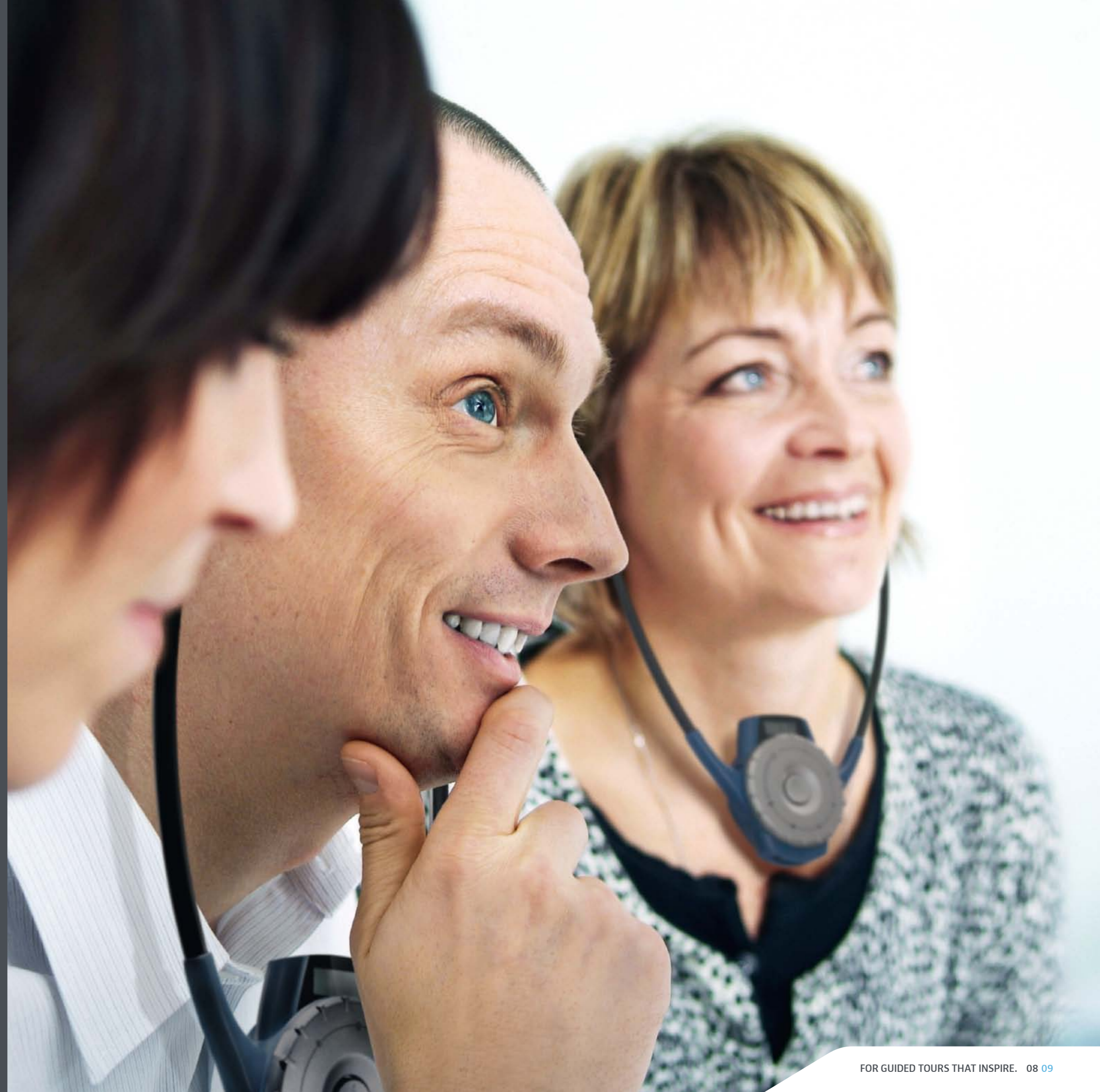
Whether it's a company tour or international conference – the Sennheiser tourguide 2020-D is the perfect companion for wireless sound transmission. For guided tours the system enables an undisturbed listening experience for up to six different groups simultaneously.

You can choose between different transmitters and receivers. The practical and lightweight stethoset receiver, for example, combines a receiver and headset in one unit. That greatly facilitates the distribution of devices – and your listeners don't need to wear more equipment that absolutely necessary. The pocket receiver can be fitted with individually selectable headsets – and permits the use of an induction loop for optimum support of the hearing-impaired during the tour.

Multilingual success: in stationary operation with the SR 2020-D rack transmitter your international conferences can also be interpreted in up to eight languages simultaneously.

Your benefits at a glance:

- Ready to go
- Intuitive operating concept
- Extremely robust
- For up to six visitor groups simultaneously – without interference
- Can be used for simultaneous interpretation in up to eight languages (stationary with the SR 2020-D rack transmitter)
- Hearing aid compatible – for optimum barrier freedom
- Practical charging technology





tourguide EK 1039: maximum sound quality in any environment.

Whether it's a factory tour or wireless transmission of interpreting channels – the Sennheiser tourguide EK 1039 is a robust all-round system for a variety of situations. For guided tours the system offers virtually boundless freedom: up to 32 different visitor groups can tour the building at the same time – without the systems interfering with each other.

With tourguide EK 1039 every single word will be heard by the listener. The outstanding sound quality and speech intelligibility of the system enable the tour guide to speak calmly at a normal level, even in a noisy environment. In applications with a hearing aid for the hearing impaired, the transmission system likewise guarantees crystal clear sound and improved intelligibility.

Your benefits at a glance:

- Optimum speech intelligibility
- Simple operation
- Extremely robust
- For up to 32 visitor groups simultaneously – without interference
- Can be integrated into an interpreting system
- Hearing aid compatible – for optimum barrier freedom

guidePORT: flexible, automated visitor information.

Whether it's a museum tour or multi-lingual multimedia application – the Sennheiser guidePORT is the ideal digital system for individual information reproduction. With tailor-made solutions for you.

In individual tours visitors can wander through the exhibition building at leisure without a visitor guide, and they are supplied with all information they need on the desired exhibit via the receiver with headset. Two model versions enable you to choose between manual and automatic information reproduction.

Ideal for classical group tours: the tour guide can spontaneously focus on core themes or activate finished recordings.

With guidePORT you can organise the interpretation for international guests at customer events. Or the system can present a video to one group of participants, while another group in the same room simultaneously listens to its own tour narration without interruption.

The comfort solution with software packets supplements your system with intelligent programming and evaluation tools for optimising your exhibition. This enables you, for example, to analyse visitor behaviour. Find out which languages are heard most often – or which exhibits are particularly popular.

Your benefits at a glance:

- Useable with or without a tour guide
- Flexible applications
- Simple, intuitive operation
- Reduces acoustic interference – for optimum sound quality
- Over 30 languages and different information levels can be used
- Hearing aid compatible – for optimum barrier freedom



tourguide 2020-D product overview.



HDE 2020-D-II

The HDE 2020-D stethoset digital tourguide receiver is comfortable to wear. This truly unique device integrates both the receiver and headphones and delivers a number of advantages for you. No longer will your audience have to carry more equipment than is absolutely necessary. Being a one-piece device, there is no longer a risk of entangled wires. The powerful battery ensures that the device will work for up to eight hours. Regardless of whether you are providing your tour in a big city or a large corporation, tourguide 2020-D will ensure that your tour proceeds without interruption. The stethoset receiver automatically deactivates itself the moment it is taken off, meaning battery life will be preserved. The tourguide no longer needs to check all the sets after one tour finishes and the next tour is due to start. Your tour participants will be able to individually adjust the volume through a rotary control on the receiver, without the need to even take the device off. An LC display clearly confirms the volume, battery status, quality of reception and the channel being listened to. Channels can easily be set and adjusted by using the middle buttons. The reception range is about 100 m if your tour is outdoors and about 50 m if it is indoors.

EK 2020-D-II

Round off your Sennheiser tourguide system with the EK 2020-D receiver. Whether conferences, guided tours or hearing assistance: this extremely sturdy and versatile bodypack receiver provides excellent audio and ease of use for your guests. The EK 2020-D can be used with headphones or an induction neckloop for transmitting the sound to hearing aids equipped with a T coil. Digital transmission ensures optimum reception quality, with a range of up to 100 metres outdoors and around 50 metres indoors. The backlit receiver display shows all settings at a glance. Of course, the bodypack receiver can be used in mixed systems with stethoset receivers. EK 2020-D: just right for everyone. All your guests need to do is connect their headphones or induction neckloop to the receiver. That's it! The receiver can conveniently be clipped to the shirt pocket or worn on a lanyard. When no signal is received, or when the headphones or neckloop are disconnected, the receiver will automatically switch off to save battery life. The operating time is up to 16 hours.

SKM 2020-D

Speaking into the hand-held microphone SKM 2020-D is the easiest way to address your audience. Should a tour participant pose a question, just hand over the microphone and everything will get clearly through to everybody. Interviewing an expert in front of your audience will make your tour even more interesting. The SKM 2020-D efficiently attenuates unwanted background noise. The transmitter is easy and comfortable to operate and highly robust. Check the back-lit display for channel and battery status. The rechargeable battery lasts for a tour of eight hours straight. After the tour, simply quick-charge the battery pack in the charging case EZL 2020-20L which has an extra slot to charge and store a spare pack.

SK 2020-D

The tourguide transmitter SK 2020-D will allow you to deliver a highly professional guided tour. Combining the bodypack transmitter with an headworn or clip-on microphone gives total freedom of movement during your tour. You have both hands free to describe an object, make a presentation and express your point. The transmitter can be easily and comfortably operated, and is highly robust. The back-lit display confirms channel choice, the radio signal and the status of the battery. Two jacks for the microphone and line ensure variable utilization. For example, you will be able to transmit an external audio source such as music from a portable CD player via your transmitter and continue to talk or mute the microphone.



EZL 2020-20L

The EZL 2020-20L charger case has been designed to be highly user-friendly. It acts as both the storage case for all equipment and charging station for the tourguide receivers and transmitter. Twenty charging bays for the receivers and two charging bays for the transmitter – or its rechargeable battery pack – are provided. A truly impressive feature of the charging case is the copy button. All you need do is to set one receiver to the correct channel, press this button just once, and all the other receivers in the case will immediately be set to the same channel.



tourguide EK 1039 product overview.



EK 1039

The EK 1039 is an extremely robust tourguide receiver for use in visitor guidance, interpreting, hearing support or command systems, for example in the field of sport. The EK 1039 can be combined with all Sennheiser headsets or induction neckloops with a 3.5 mm jack plug. The operation of the system is particularly simple and intuitive. A description can also be stored for each channel. Together with the channel number and battery status this can be easily read on the backlit display. Due to its broad switching bandwidth and compatibility with Sennheiser Series ew G3 100/300/500 and Series 2000 wireless transmitters, the highly versatile EK 1039 guarantees maximum transmission reliability.

PMX 90

A sporty, urban model, the PMX 90 feature an ergonomic neckband for superior comfort and a secure fit. Their single-sided cable provides convenience for whatever tasks you are engaged in while the soft ear pads provide added comfort.



SKM 2000

It's all in the design. The hand-held transmitter of the 2000 series shows its strength: during use, in its performance, in its features. Sennheiser's technical know-how is shown through its switchable transmission power, intuitive menu navigation, an easy-to-read graphic display and external charging contacts for charging the optional rechargeable batteries directly. SKM 2000 is compatible with all ew capsules, including the MMK 965-1 true condenser capsule, whose wired version, e 965, has already proven to be a great success. Colors: nickel and black.



SK 2000

This lightweight yet extremely rugged bodypack transmitter is a delight for both the musician and the audience. With an AF frequency response of 25 to 20,000 Hz, it transmits even the sound of a bass guitar with rich fundamentals. Three RF output powers (four in the US version) provide longer transmission ranges or more channels per frequency range. The rechargeable batteries of the SK 2000 (optional) can be charged right in the unit using the external charging contacts.

guidePORT product overview.



GP EK 3202

Just four buttons are enough to ensure convenient operation of the basic functions. Each visitor can set the desired volume, stop the information programme or simply play it again. Models with more buttons and other functions can be found at www.guideport.de. The recordings in the guidePORTs can be changed flexibly and at short notice – new and additional information can be downloaded “on the move”. All models are designed to receive live recordings. This means you can reliably communicate with your visitors from your central offices at all times.

GP L 3202

The charging units are not only used to store the receivers, but also to ensure that they are always ready for use. And that’s not all: if required, they can be combined with check-out systems, enabling the individual configuration process to be automated as far as possible. Statistics on visitor behaviour are also extracted here and transferred to a computer.



GP 30, GP 03 und GP 03-M

The ultra-lightweight (stereo) Sennheiser headphones sit comfortably on the ear and guarantee an uncompromising experience in hi-fi quality.



GP ID 3200

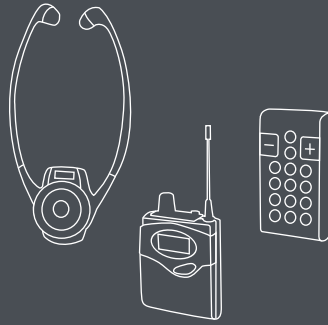
The identifiers, which are invisible to visitors, are positioned either on or next to the exhibits. Each identifier has a special ID code that it transmits constantly. As soon as visitors enter the magnetic field of the identifier, the guidePORT picks up the identifier code and triggers transmission of the appropriate recording. The strength of the magnetic field is such that it poses no risk whatsoever to health. The range of the continuous signal can be flexibly set between 30 cm and 3 m. The range can be easily extended and areas clearly delimited with the installation of additional elements.



SK 3202

With the mobile transmitter SK 3202 from Sennheiser you can offer your visitors guidePORT system guided tours. The transmitter guarantees excellent clarity, even over larger distances. As a result, there is no crowding and the guided tour does not interfere with other visitors. Those on the guided tour are able to move around freely. What’s more, with SK 3202 you have the option of integrating an external stereo audio source (e.g. CD player) – allowing you to create first-class, customised tours, either with elements of an existing guidePORT installation or, indeed, with live elements. The mobile transmitter – together with all the guidePORTs to be issued for the guided tour – is set up conveniently, safely and simply prior to the tour. Once the tour is over, the visitors can go on to enjoy an automatically guided tour.





 **SENNHEISER**

Sennheiser electronic GmbH & Co. KG

Am Labor 1, 30900 Wedemark, Germany
www.sennheiser.com