

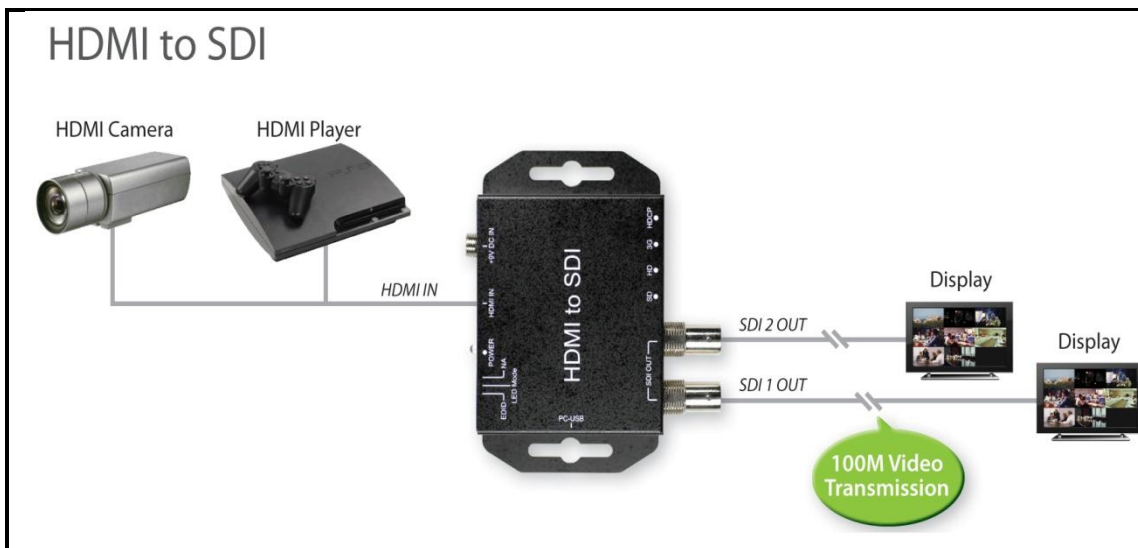
HDMI²SDI Box

User Manual



Feature	3
Front Panel.....	4
Rear Panel.....	4
Dip Switch	5
EDID Leaning.....	6
Specifications.....	7
Firmware Upload	8

- Supports HD formats:
 - 720p50 & 60
 - 1080i50 & 60
 - 1080p24, 25, 30, 50 & 60
- Support 525i & 625i SD D1 format
- Support 2K(2048 x 1080) format
- Support up to 7.1ch of audio output
- Auto 3G/HD/SD-SDI detection
- HDMI 1.2 supported
- SDI compliant outputs
- External DIP Switch Configuration
- Firmware is upgradable in the field using the integrated USB port
- The converter is Plug-and-Play

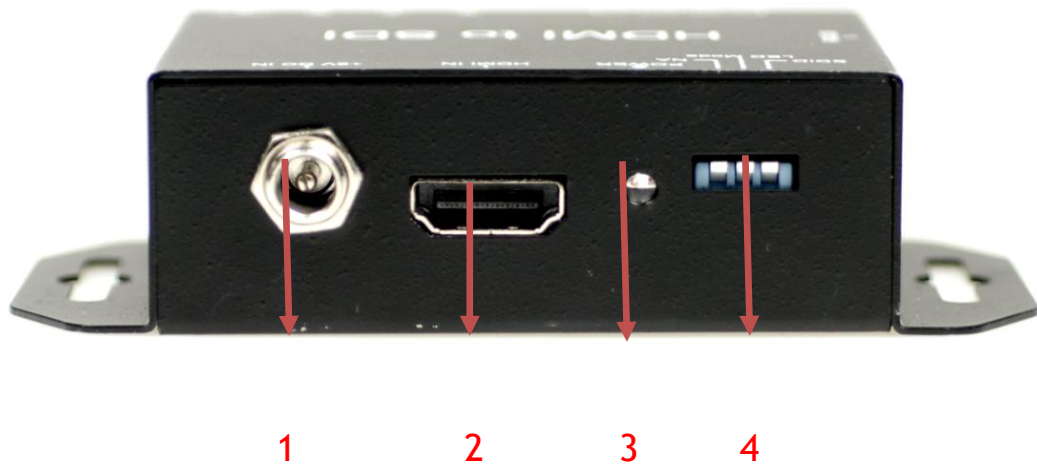


Front Panel



1. 3G/HD/SD-SDI Output 1
2. 3G/HD/SD-SDI Output 2
3. 3G/HD/SD/HDCP LED indicator

Rear Panel



1. Power (+6V ~ + 15V)
2. HDMI Input
3. Power LED indicator
4. Dip Switch:

Pin On (↑): Enable	Pin OFF (↓): Disable

- a. EDID
- b. LED Mode
- c. NA

- **EDID:**
In order to keep the compatibility of HDMI to most monitors, HD2SDI features EDID learning ability.
Pin On (↑): Default EDID
Pin OFF (↓): Leaning EDID

- **LED Mode:**
Pin OFF (↓):

Resolution	SD LED	HD LED	3G LED	HDCP LED
720 x 480 i (NTSC)	○	○	○	●
720 x 576 i (PAL)	○	○	●	○
1280 x 720 p50	○	○	●	●
1280 x 720 p60	○	●	○	○
1920 x 1080 i50	○	●	○	●
1920 x 1080 i60	○	●	●	○
1920 x 1080 p24	○	●	●	●
1920 x 1080 p25	●	○	○	○
1920 x 1080 p30	●	○	○	●
1920 x 1080 p50	●	○	●	○
1920 x 1080 p60	●	○	●	●
2048 x 1080 p24	●	●	○	○
2048 x 1080 p25	●	●	○	●
	●	●	●	○
Un-Support	●	●	●	●

● : LED ON

○ : LED OFF

Pin On (↑)

Resolution	3G LED	HD LED	SD LED
NTSC / PAL	○	○	●
720p / 1080i / 1080 [24p, 30p]	○	●	○
1080 [50p,60p] / 2K	●	○	○

● : LED ON

○ : LED OFF

- **NA:**

1. Turn off HD2SDI Box and EDID pin is pull down.
2. Connect the TV monitor thru HDMI port to HD2SDI box, and then turn on HD2SDI box.
3. The LED of HD2SDI box will light, which indicates the EDID learning process is finished.

LED Sequence	SD LED	HD LED	3G LED	HDCP LED
Start ↓ Finish	○	○	○	●
	○	○	●	●
	○	●	●	●
	●	●	●	●
	○	○	○	○

● : LED ON

○ : LED OFF

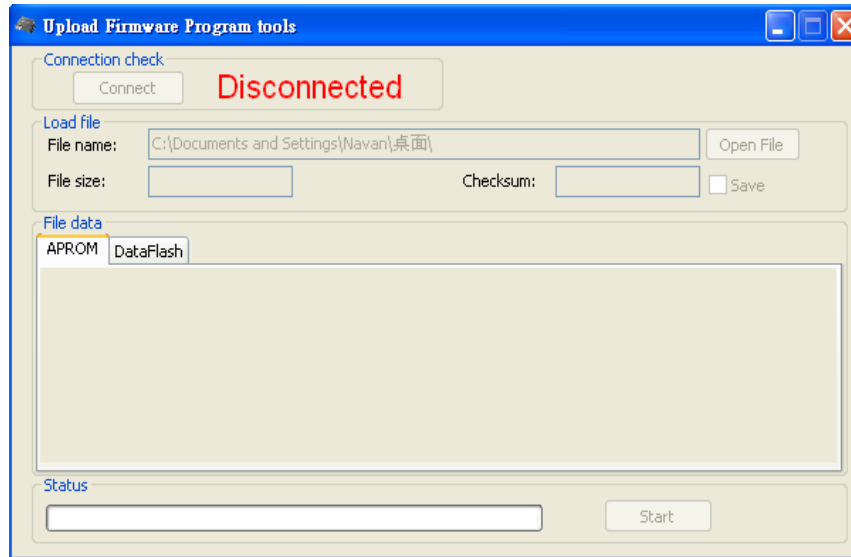
4. Connect HD2SDI box to the HDMI source through a HDMI cable

DESCRIPTION	
Support Video Resolution	SD – 720 x 480 i (NTSC) / 720 x 576 I (PAL) HD– 1280 x 720 p 1920 x 1080 50i/60i 1920 x 1080 24p/30p 3G– 1920 x 1080 50p/60p 2K– 2048 x 1080 24p/30p
SDI format	SD-SDI, HD-SDI & 3G-SDI
Audio Support	7.1ch/5.1ch/Stereo,
Audio Sample	Auto Ra-sample to 48Khz (For Stereo)
Coaxial Cable Type	RG6/RG59(75 Ω)
Cable Equalization	3G: 140m of RG6 100m of RG59 HD: 200m of RG6 140m of RG59 SD: 400m of RG6 280m of RG59
Input	1 x HDMI
Output	2 x BNC [SDI]
BNC Connector	3G 75 Ω inter-locked socket
HDMI Connector	TYPE A [19-pin female]
DIP Switch	3-pin [EDID / LED mode / NA]
Housing	SECC
Dimension	L:104mm x W:63.3mm xH:26mm
Power Source	Power Adapter: AC 100 ~ 240 V/DC (+6 ~ 15 V)
Operation Temperature	0~50°C [32~114°F]
Storage Temperature	-20~+60°C

- Firmware is upgradable in the field using the integrated USB port

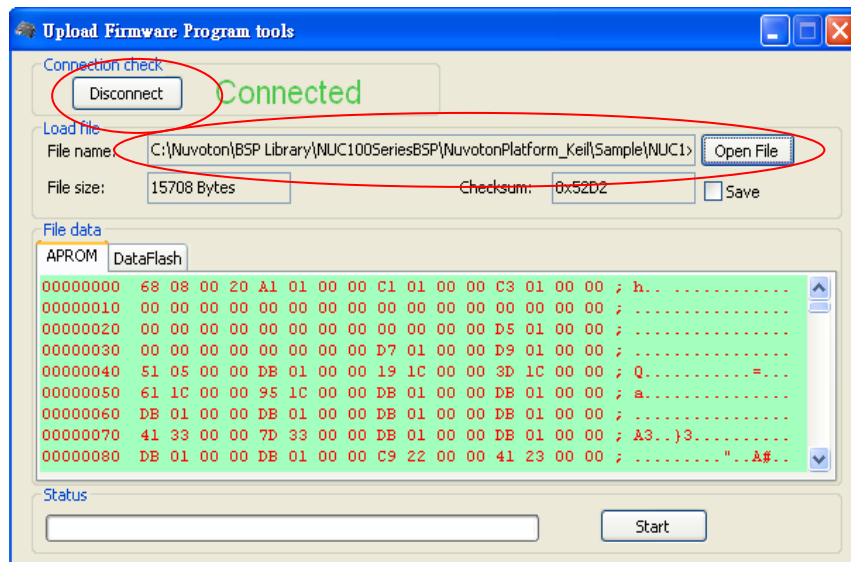
How to Firmware upgrade:

Step 1. Open Upload Firmware Program tools.exe and connect USB and PC

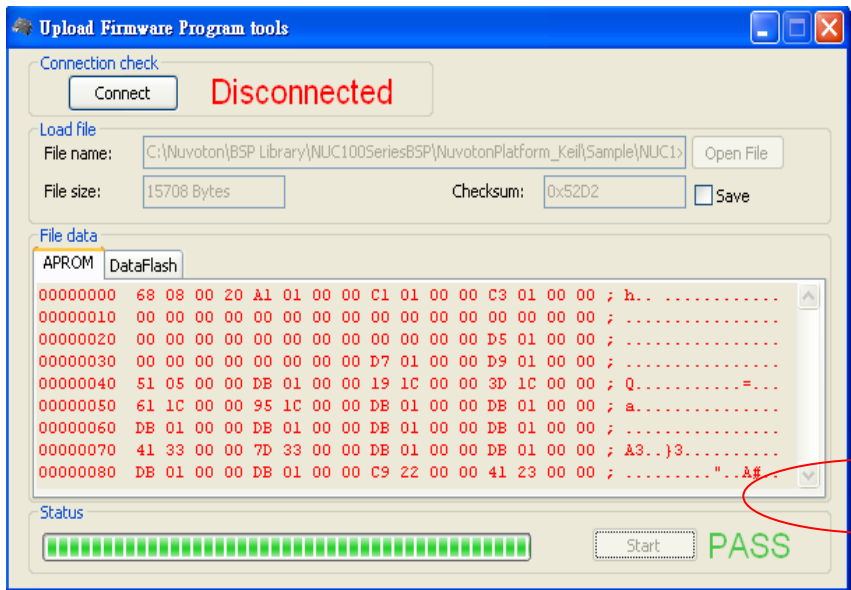


Step 2. Plug and Play AC power

Step 3. Push Connect Button and Select Firmware File (Bin File)



Step 4. Push Start Button



Step 5. Close Upload Firmware Program tools

