

SDI2HDMI Box

User Manual

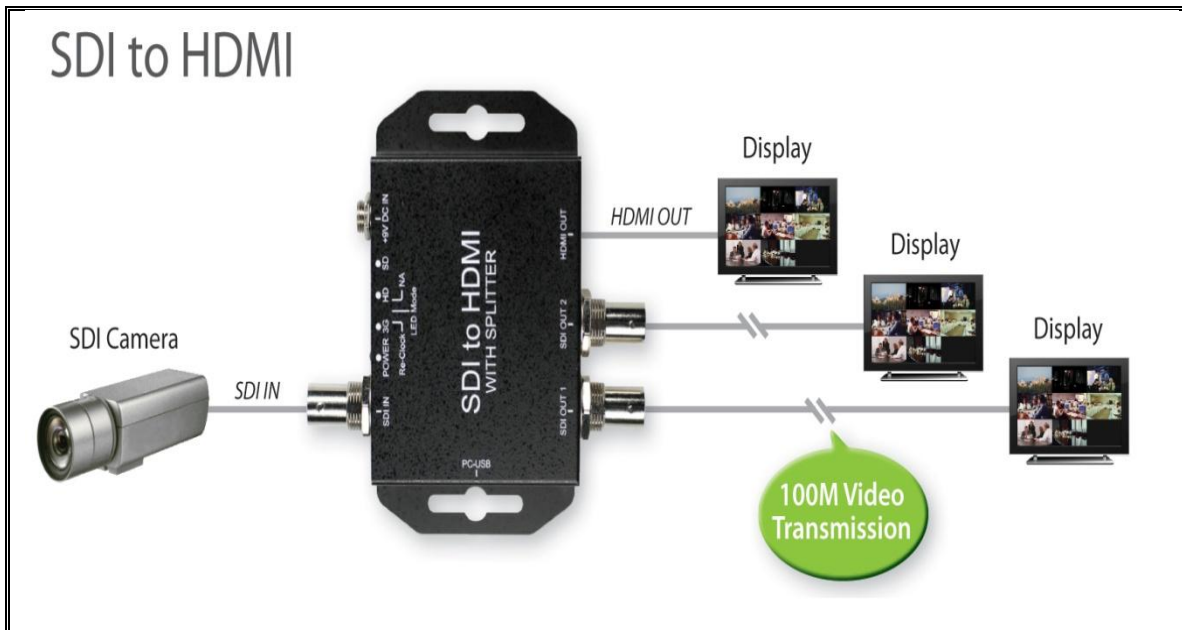


Index

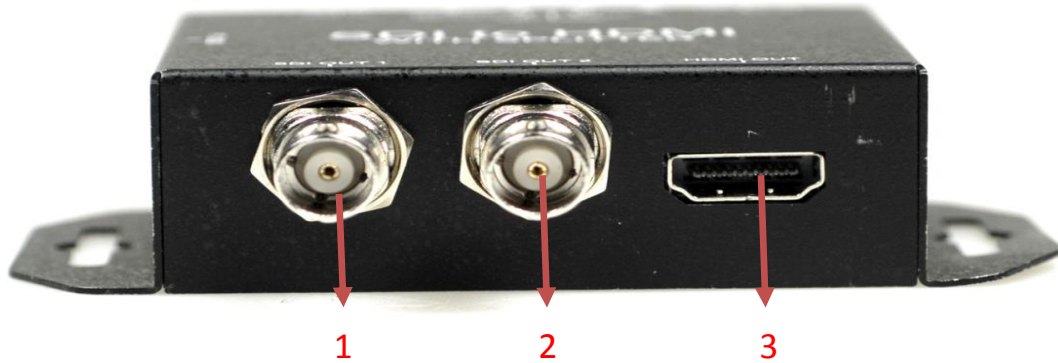
Feature	3
Front Panel.....	4
Rear Panel.....	4
Dip Switch	5
Specifications.....	6
Firmware Upload	7

Feature

- Supports HD format:
 - 720p 50 & 60
 - 1080i50 & 60
 - 1080p24, 25, 30, 50 & 60
- Support 525i & 625i SD D1 format
- Support 2K(2048 x 1080) format
- Audio is support 2 channel.
- Auto 3G/HD/SD-SDI detection
- Firmware is upgradable in the field using the integrated USB port
- The converter is Plug-and-Play
- Dual output are available (SDI & HDMI)
- One 3G-SDI source to two 3G-SDI devices

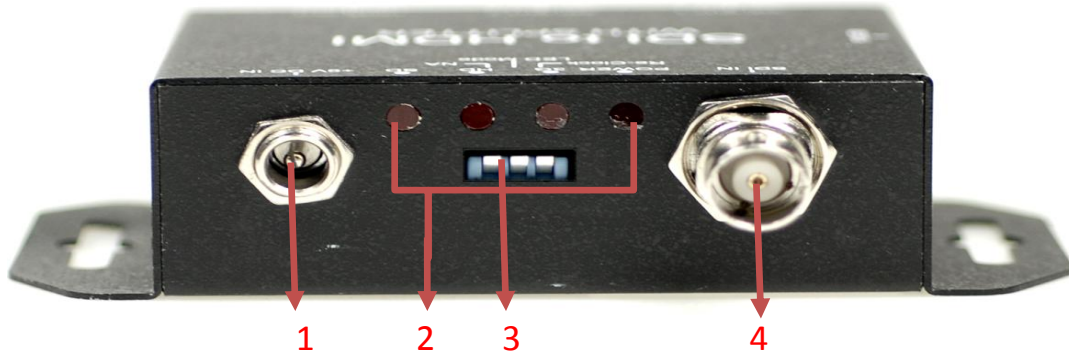


Front Panel



1. 3G/HD/SD-SDI Output 1
2. 3G/HD/SD-SDI Output 2
3. HDMI Output

Rear Panel



1. Power (+6V ~ + 15V)
2. 3G/HD/SD/Power LED indicator
3. Dip Switch:

Pin On (↑): Enable	Pin OFF (↓): Disable

- a. Re-Clock
- b. LED Mode
- c. NA
4. SDI Input

Dip Switch

- Re-clock: Receives a signal and retransmits it at a higher level and/or higher power, or onto the other side of an obstruction, so that the signal can cover longer distances.
- LED Mode:
Pin OFF (↓):

Resolution	SD LED	HD LED	3G LED	POWER LED
720 x 480 i (NTSC)	○	○	○	●
720 x 576 i (PAL)	○	○	●	○
1280 x 720 p50	○	○	●	●
1280 x 720 p60	○	●	○	○
1920 x 1080 i50	○	●	○	●
1920 x 1080 i60	○	●	●	○
1920 x 1080 p24	○	●	●	●
1920 x 1080 p25	●	○	○	○
1920 x 1080 p30	●	○	○	●
1920 x 1080 p50	●	○	●	○
1920 x 1080 p60	●	○	●	●
2048 x 1080 p24	●	●	○	○
2048 x 1080 p25	●	●	○	●
	●	●	●	○
Un-Support	●	●	●	●

● : LED ON

○ : LED OFF

Pin On (↑)

Resolution	3G LED	HD LED	SD LED
NTSC / PAL	○	○	●
720p / 1080i / 1080 [24p, 30p]	○	●	○
1080 [50p,60p] / 2K	●	○	○

● : LED ON

○ : LED OFF

- NA:

Specifications

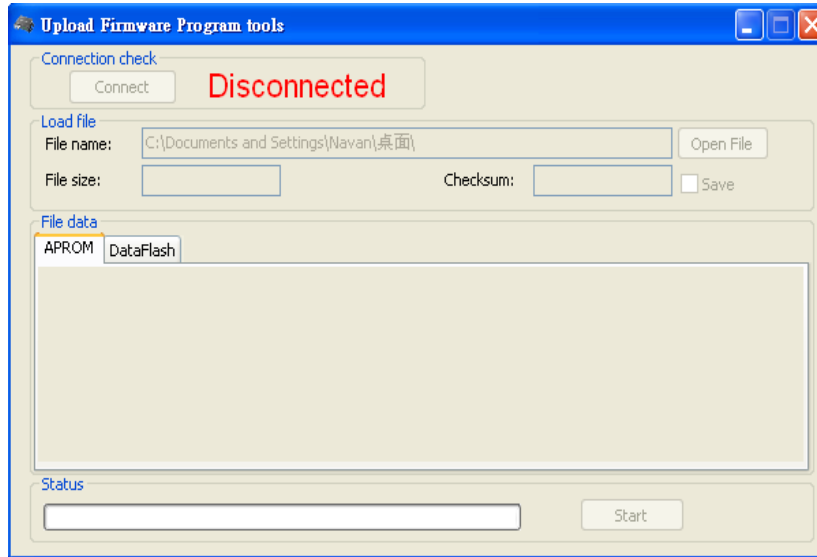
DESCRIPTION	
Support Video Resolution	SD – 720 x 480 i / 720 x 576 i HD– 1280 x 720 50p/60p 1920 x 1080 50i/60i 1920 x 1080 24p/30p 3G– 1920 x 1080 50p/60p 2K– 2048 x 1080 24p/30p
SDI format	SD-SDI(SMPTE 259M) HD-SDI(SMPTE 292M) 3G-SDI (SMPTE 494M/495M)
Audio Support	2 Channel of Stereo
Re-clock Function	Yes (Dip Switch)
Coaxial Cable Type	RG6/RG59(75 Ω)
Cable Equalization	3G: 140m of RG6 100m of RG59 HD: 200m of RG6 140m of RG59 SD: 400m of RG6 280m of RG59
Input	1 x BNC [SDI]
Output	1 x HDMI 2 x BNC [SDI]
BNC Connector	3G 75 Ω inter-locked socket
HDMI Connector	TYPE A [19-pin female]
DIP Switch	3-pin [Re-clock / LED mode / NA]
Housing	SECC
Dimension	L:104mm x W:63.3mm xH:26mm
Power Source	Power Adapter: AC 100 ~ 240 V/DC (+6 ~ 15 V)
Operation Temperature	0~50°C [32~114°F]
Storage Temperature	-20~+60°C

Firmware Upload

- Firmware is upgradable in the field using the integrated USB port

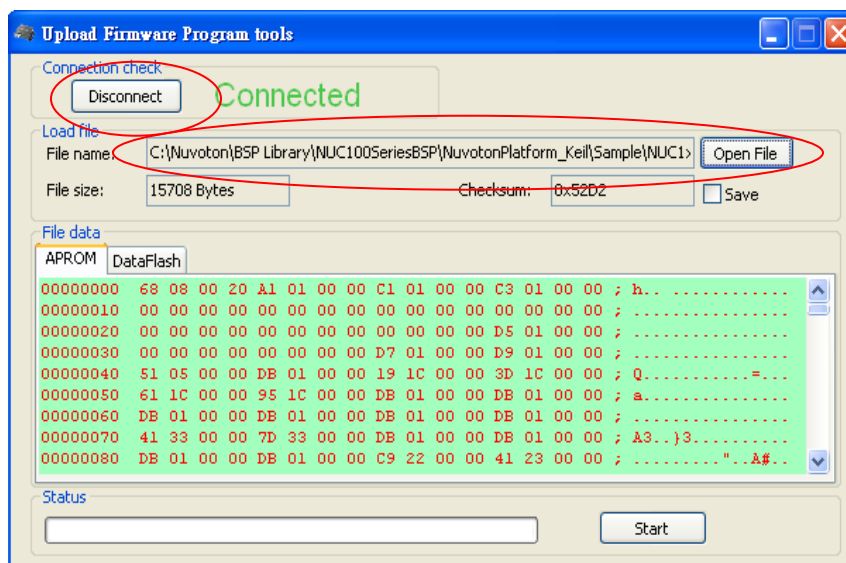
How to Firmware upgrade:

Step 1. Open Upload Firmware Program tools.exe and connect USB and PC

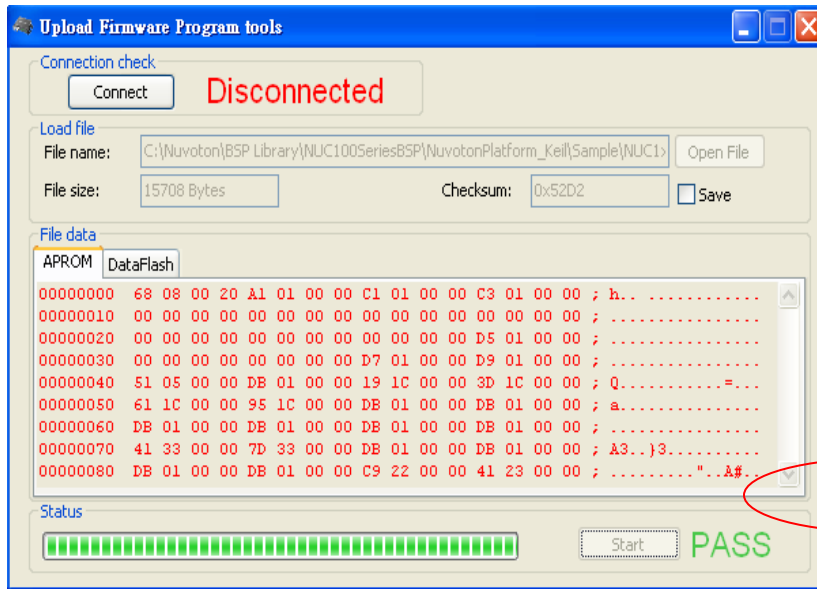


Step 2. Plug and Play AC power

Step 3. Push Connect Button and Select Firmware File (Bin File)



Step 4. Push Start Button



Step 5. Close Upload Firmware Program tools

